

SWABR ONE DEPARTURE (RNAV)

CLEBURNE, TEXAS

CTAF
1228
REGIONAL DEP CON
135.975 379.9

TOP ALTITUDE: ASSIGNED BY ATC

TAKEOFF MINIMUMS

Rwy 15: Standard.

Rwy 33: 300-1½ or standard with minimum climb of 422' per NM to 1200.

NOTE: RNAV 1.

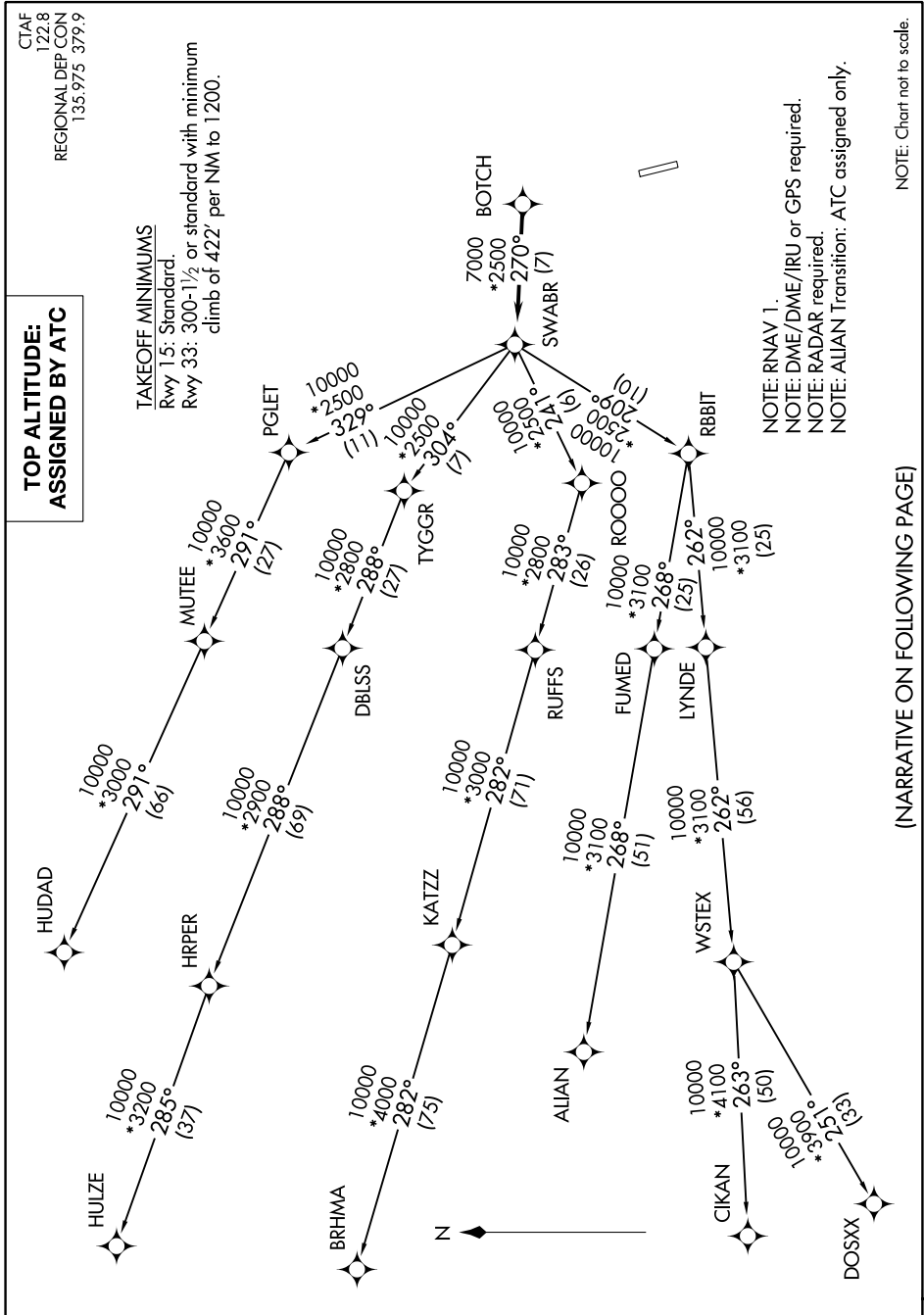
NOTE: DME/DME/IRU or GPS required.

NOTE: RADAR required.

NOTE: ALIAN Transition: ATC assigned only.

NOTE: Chart not to scale.

SC-2, 11 JUL 2024 to 08 AUG 2024



(NARRATIVE ON FOLLOWING PAGE)

SC-2, 11 JUL 2024 to 08 AUG 2024

SWABR ONE DEPARTURE (RNAV)

(SWABR1 .SWABR) 24MAR22

CLEBURNE, TEXAS

CLEBURNE RGNL (CPT)