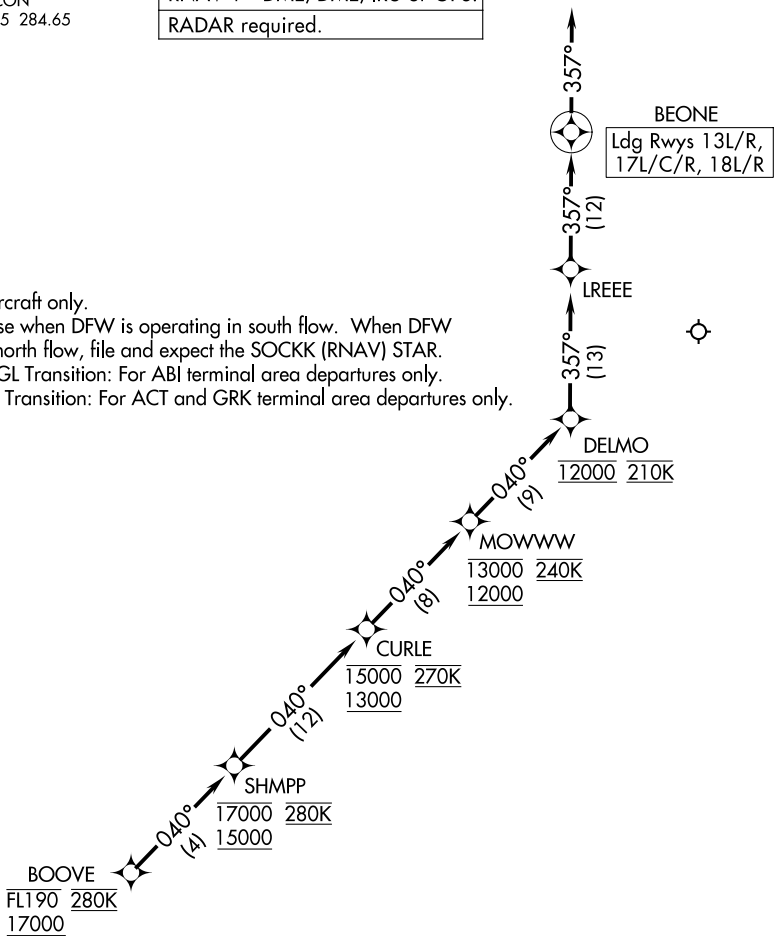


BOOVE SEVEN ARRIVAL (RNAV) Arrival Routes

REGIONAL APP CON
119.875 133.625 284.65
D-ATIS ARR
123.775

RNAV 1 - DME/DME/IRU or GPS.
RADAR required.

- NOTE: Jet aircraft only.
- NOTE: For use when DFW is operating in south flow. When DFW is in north flow, file and expect the SOCKK (RNAV) STAR.
- NOTE: SNGGL Transition: For ABI terminal area departures only.
- NOTE: KIILO Transition: For ACT and GRK terminal area departures only.



NOTE: Chart not to scale.

ARRIVAL ROUTE DESCRIPTION

From BOOVE on track 040° to cross SHMPP between 15000 and 17000 and at 280K, then on track 040° to cross CURLE between 13000 and 15000 and at 270K, then on track 040° to cross MOWWW between 12000 and 13000 and at 240K, then on track 040° to cross DELMO at 12000 and at 210K, then on track 357° to LREEE, then on track 357° to BEONE, then on track 357°.

Expect RADAR vectors to final approach course.