

(BEREE.WHINY4) 17117

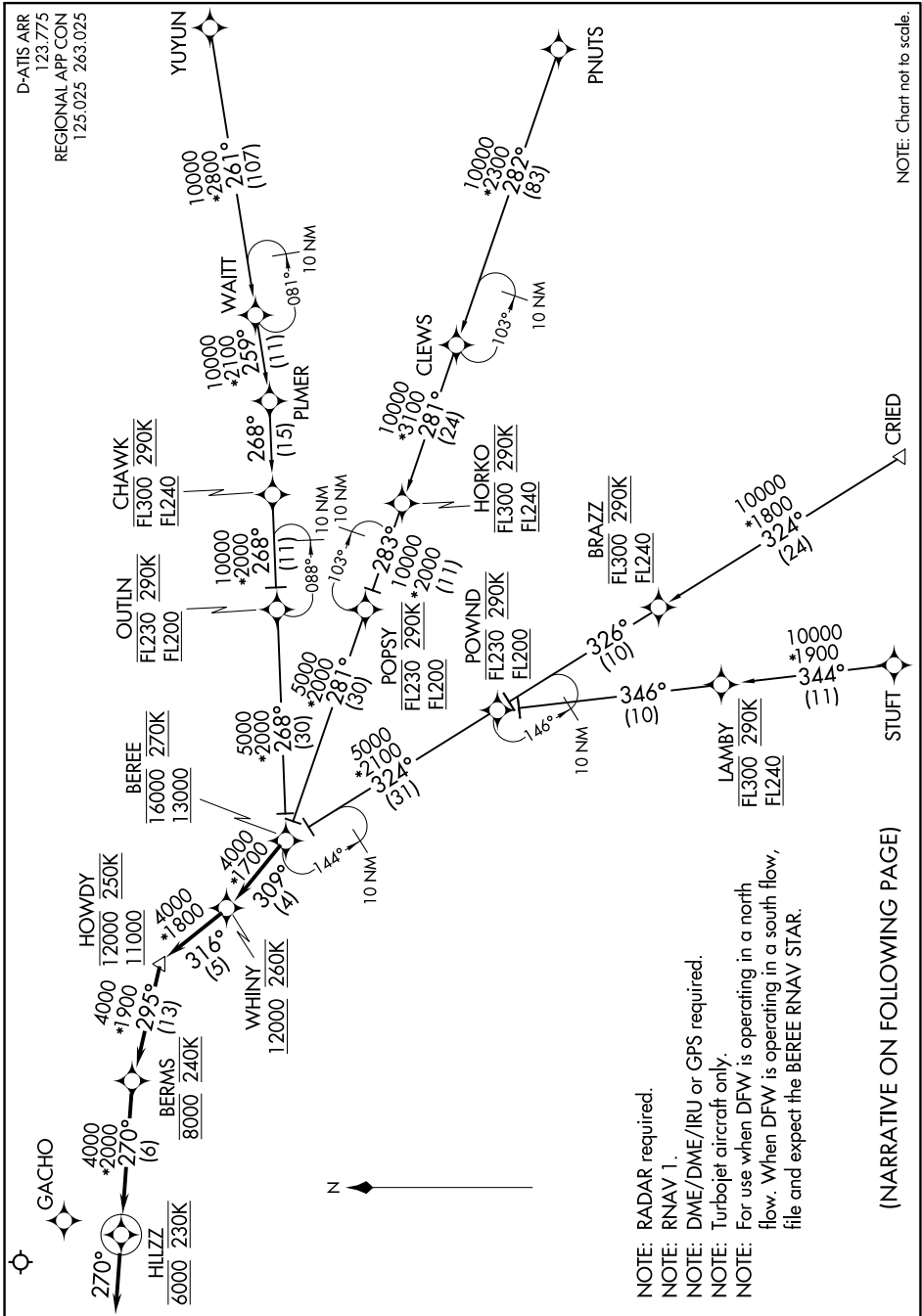
AL-6039 (FAA)

DALLAS-FORT WORTH INTL (DFW)
DALLAS-FORT WORTH, TEXAS

WHINY FOUR ARRIVAL (RNAV)

D-ATIS ARR
123.775
REGIONAL APP CON
125.025 263.025

SC-2, 11 JUL 2024 to 08 AUG 2024



NOTE: Chart not to scale.

- NOTE: RADAR required.
- NOTE: RNAV 1.
- NOTE: DME/DME/IRU or GPS required.
- NOTE: Turbojet aircraft only.
- NOTE: For use when DFW is operating in a north flow. When DFW is operating in a south flow, file and expect the BEREE RNAV STAR.

(NARRATIVE ON FOLLOWING PAGE)

SC-2, 11 JUL 2024 to 08 AUG 2024

WHINY FOUR ARRIVAL (RNAV)

(BEREE.WHINY4) 26MAY16

DALLAS-FORT WORTH, TEXAS
DALLAS-FORT WORTH INTL (DFW)