

(STYCK8.STYCK) 21280

AL-6073 (FAA)

CLEVELAND MUNI (6R3)

# STYCK EIGHT DEPARTURE (RNAV)

CLEVELAND, TEXAS

**TOP ALTITUDE:  
ASSIGNED BY ATC**

AWOS-3

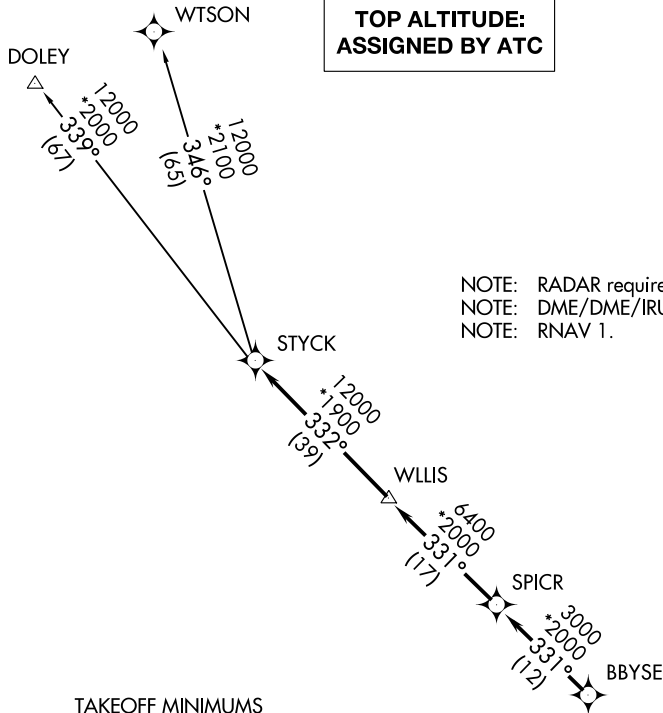
119.325

CTAF

123.0

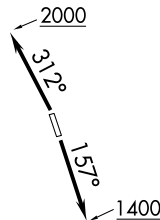
HOUSTON DEP CON

119.7 281.4



NOTE: RADAR required.  
NOTE: DME/DME/IRU or GPS required.  
NOTE: RNAV 1.

**TAKEOFF MINIMUMS**  
Rwys 16, 34: Standard with minimum climb of 500' per NM to 660.



NOTE: Chart not to scale.

## DEPARTURE ROUTE DESCRIPTION

**TAKEOFF RUNWAY 16:** Climb on heading 157° to 1400 for RADAR vectors to BBYSE, thence. . .

**TAKEOFF RUNWAY 34:** Climb on heading 312° to 2000 for RADAR vectors to BBYSE, thence. . .

. . . on track 331° to SPICR, then on track 331° to WLLIS, then on track 332° to STYCK, then on (transition). Maintain ATC assigned altitude. Expect filed altitude 10 minutes after departure.

**DOLEY TRANSITION (STYCK8.DOLEY)**  
**WTSON TRANSITION (STYCK8.WTSON)**

# STYCK EIGHT DEPARTURE (RNAV)

(STYCK8.STYCK) 07OCT21

CLEVELAND, TEXAS

CLEVELAND MUNI (6R3)

SC-5, 11 JUL 2024 to 08 AUG 2024

SC-5, 11 JUL 2024 to 08 AUG 2024