

# LIVERMORE THREE DEPARTURE (OBSTACLE)

SW-2, 11 JUL 2024 to 08 AUG 2024

## DEPARTURE ROUTE DESCRIPTION

**TAKEOFF RUNWAYS 7L/R:** Climb heading 075° to 1000, then climbing left turn heading 340° and on SAC VORTAC R-177 to ALTAM, thence . . . .

**TAKEOFF RUNWAYS 25L/R:** Climb heading 255° to 1200, then climbing right turn heading 020° and on OAK VOR/DME R-060 to ALTAM, thence . . . .

**VCOA ALL RUNWAYS:** Obtain ATC approval for VCOA when requesting IFR clearance. Climb in visual conditions to cross Livermore Airport at or above 3100, thence . . . .

. . . . continue climb on course to the MEA/MCA for route of flight.

## TAKEOFF MINIMUMS

**Rwys 7L/R:** Standard with minimum climb of 375' per NM to 3500 or 2900-3 for VCOA.

**Rwys 25L/R:** Standard with minimum climb of 295' per NM to 3400 or 2900-3 for VCOA.

NORCAL DEP CON  
Rwys 7L/R 123.85 278.3  
Rwys 25L/R 125.35 354.1

ATIS  
119.65

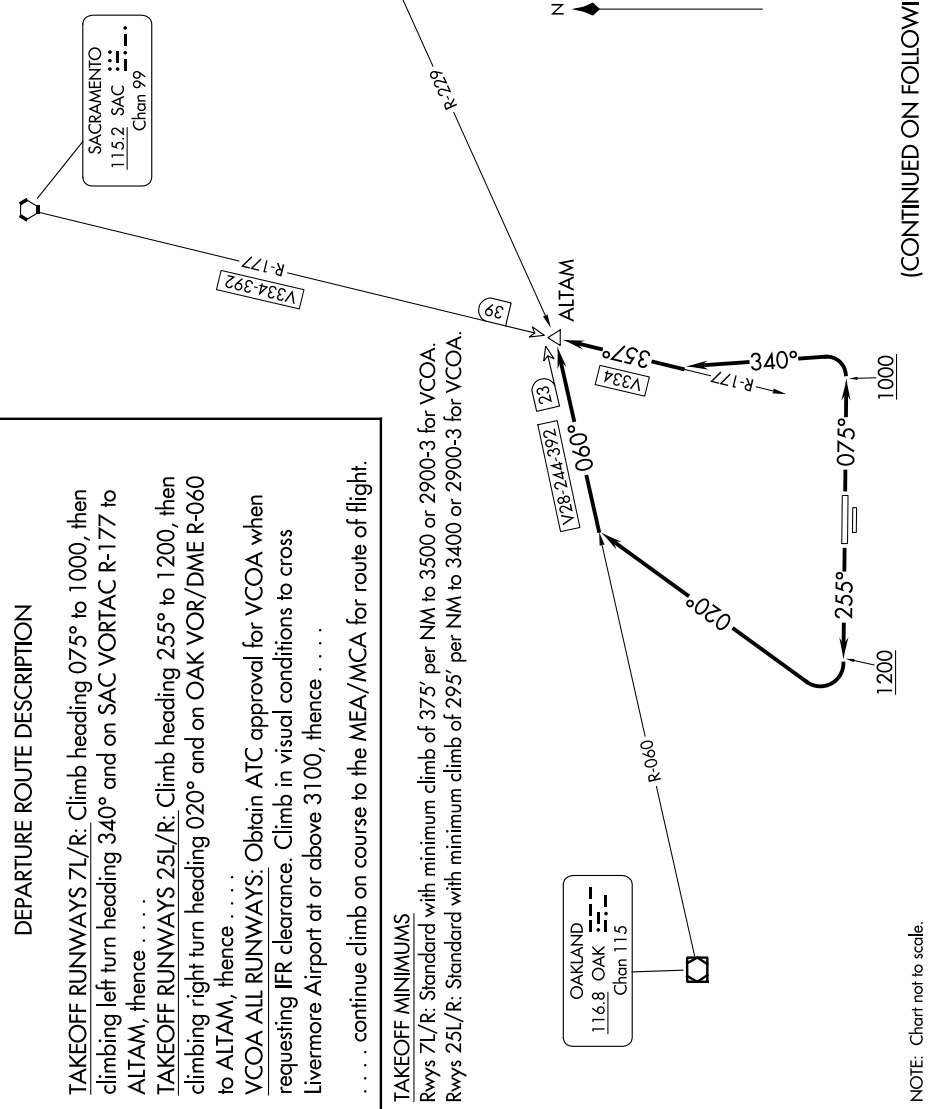
GND CON  
121.6

LIVERMORE TOWER ★  
118.1 239.25

SACRAMENTO  
115.2 SAC  
Chan 99

LINDEN  
114.8 LIN  
Chan 95

OAKLAND  
116.8 OAK  
Chan 115



(CONTINUED ON FOLLOWING PAGE)

NOTE: Chart not to scale.

# LIVERMORE THREE DEPARTURE (OBSTACLE)

SW-2, 11 JUL 2024 to 08 AUG 2024