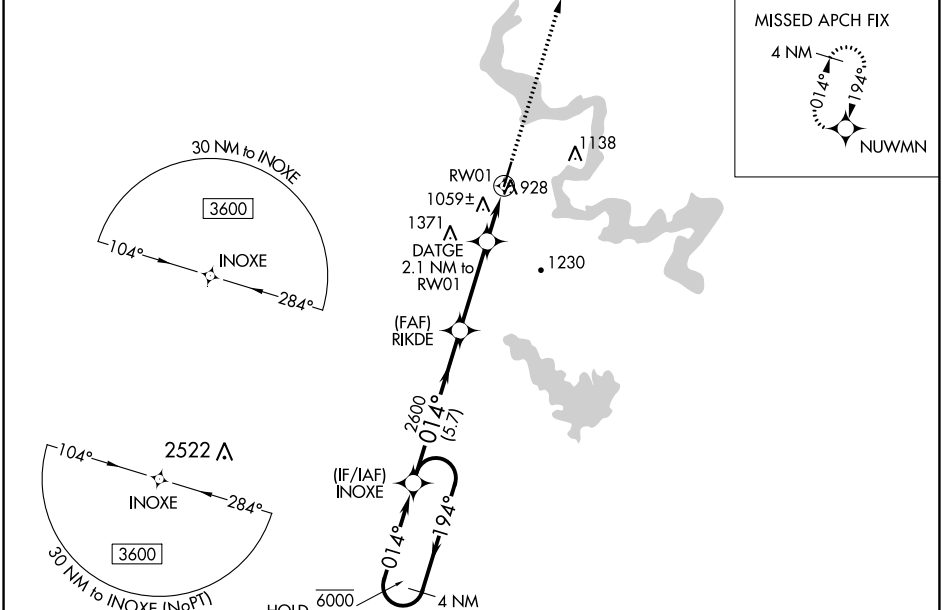


WAAS CH 42844 W01A	APP CRS 014°	Rwy ldg 5201 TDZE 835 Apt Elev 835
---------------------------------	------------------------	---

RNAV (GPS) RWY 1

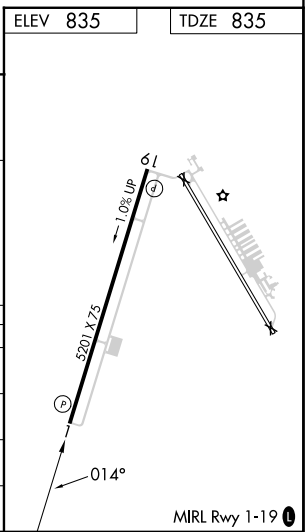
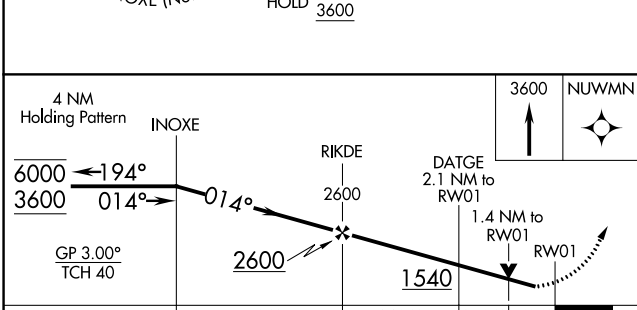
GRANBURY RGNL (G.D.J)

RNP APCH - GPS.		MISSED APPROACH: Climb to 3600 direct NUWMN and hold, continue climb-in-hold to 3600.
▼ Rwy 1 helicopter visibility reduction below 3/4 SM NA. For uncompensated Baro-VNAV systems, LNAV/VNAV NA below -16°C or above 54°C. ▲		
AWOS-3PT 118.925	FORT WORTH CENTER 127.15 314.0	UNICOM 123.0 (CTAF) 0



SC-2, 11 JUL 2024 to 08 AUG 2024

SC-2, 11 JUL 2024 to 08 AUG 2024



CATEGORY	A	B	C	D
LPV DA	1139-7/8	304 (400-7/8)		NA
LNAV/VNAV DA	1320-13/8	485 (500-13/8)		NA
LNAV MDA	1320-1	485 (500-1)	1320-13/8 485 (500-13/8)	NA
C CIRCLING	1360-1 525 (600-1)	1380-1 545 (600-1)	1680-2 1/2 845 (900-2 1/2)	NA