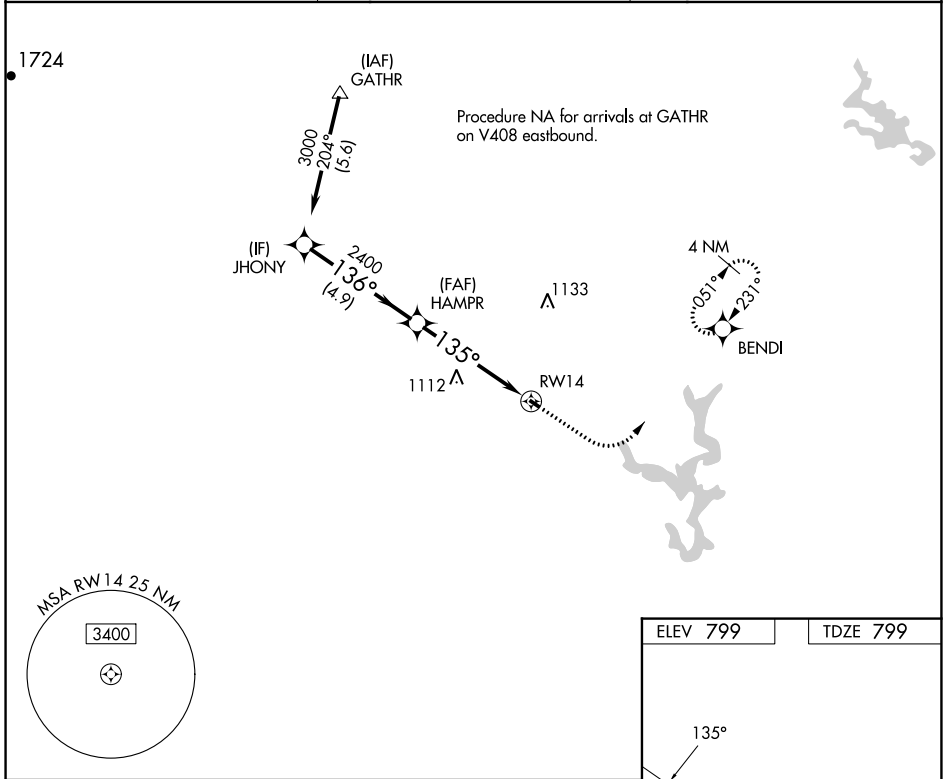


|             |          |             |
|-------------|----------|-------------|
| APP CRS     | Rwy Idg  | <b>1840</b> |
| <b>135°</b> | TDZE     | <b>799</b>  |
|             | Apt Elev | <b>799</b>  |

# RNAV (GPS) RWY 14

CLEARVIEW AIRPARK (2W2)

|  |   |   |
|--|---|---|
| RNP APCH.  |   | MISSED APPROACH: Climb to 1500 then climbing left turn to 3000 direct BENDI and hold. |
| <p><b>▼</b> Procedure NA at night. Rwy 14 helicopter visibility reduction below 1 SM NA. Use Carroll County Rgnl/Jack B. Poage Fld altimeter setting, when not received, use Gaithersburg altimeter setting and increase all MDA 60 feet.</p> <p><b>▲</b> NA</p> |   |   |
| DMW AWOS-3<br><b>121.25</b>  | POTOMAC APP CON<br><b>125.525 291.625</b> | UNICOM<br><b>122.8 (CTAF) 0</b>   |



NE-3, 11 JUL 2024 to 08 AUG 2024

NE-3, 11 JUL 2024 to 08 AUG 2024

|   |                                      |   |    |   |
|---|--------------------------------------|---|----|---|
| <p>JHONY</p> <p>3000</p> <p>136°</p> <p>HAMPR</p> <p>2400</p> <p>135°</p> <p>RW14</p> <p>4.9 NM</p> <p>5 NM</p> | Visual Segment - Obstacles.          |   |    |   |
|   | <p>1500</p> <p>3000</p> <p>BENDI</p> |   |    |   |
| CATEGORY  | A                                    | B | C  | D |
| LNAV MDA  | 1360-1<br>561 (600-1)                |   | NA |   |
| <b>C</b> CIRCLING   | 1360-1<br>561 (600-1)                |   | NA |   |

