

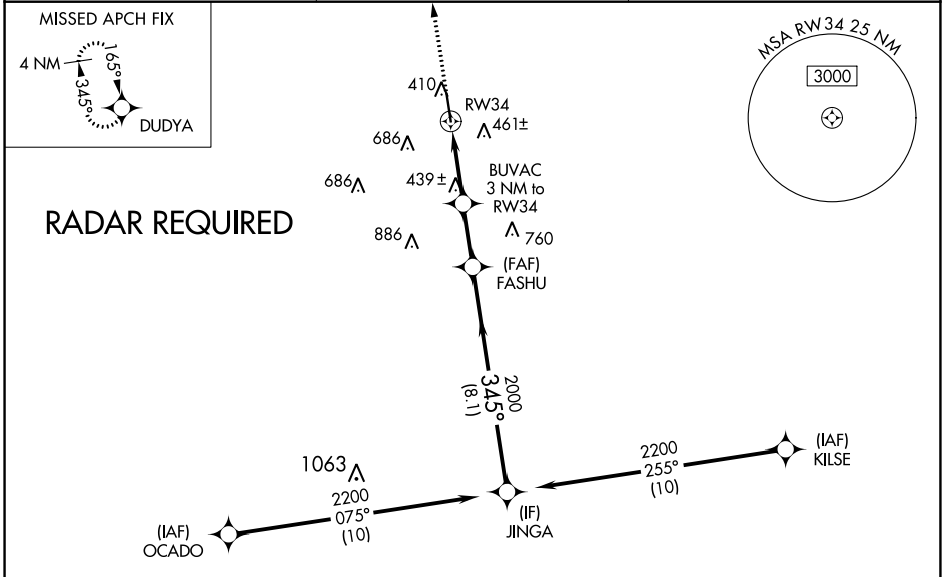
WAAS CH <b>77616</b> <b>W34A</b>	APP CRS <b>345°</b>	Rwy Idg TDZE Apt Elev	<b>6003</b> <b>269</b> <b>318</b>
--	------------------------	-----------------------------	---

# RNAV (GPS) RWY 34

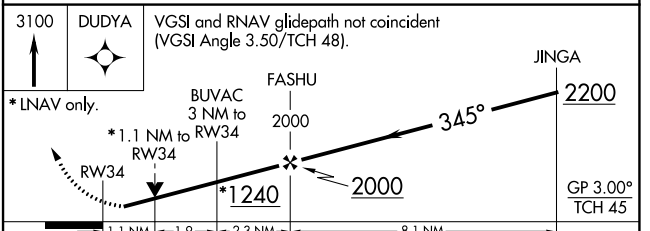
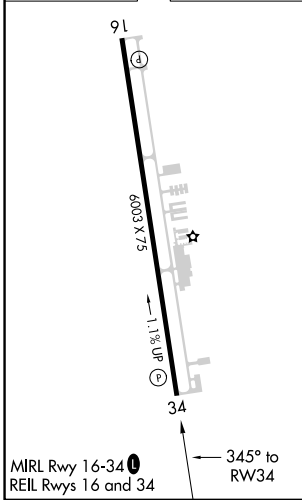
BRENHAM MUNI (11R)

RNP APCH.	<p>⚠ For uncompensated Baro-VNAV systems, LNAV/VNAV NA below -1.5°C or above 37°C. Rwy 34 helicopter visibility reduction below ¾ SM NA. When local altimeter setting not received, use College Station altimeter setting and increase all DA 52 feet, and all MDA 60 feet; increase LPV and LNAV/VNAV all Cats visibility ¼ SM. VDP and Baro-VNAV NA with College Station altimeter setting.</p>	MISSED APPROACH: Climb to 3100 direct DUDYA and hold.
-----------	---	---

AWOS-3 <b>121.125</b>	HOUSTON APP CON <b>134.3 360.85</b>	UNICOM <b>123.075 (CTAF)</b> 📻
--------------------------	--	-----------------------------------



ELEV 318	TDZE 269
----------	----------



CATEGORY	A	B	C	D
LPV DA		519-¾	250 (200-¾)	
LNAV/VNAV DA		718-1½	449 (400-1½)	
LNAV MDA	700-1	431 (400-1)	700-1¾	431 (400-1¾)