

VORTAC FBC 108.2 Chan 19	APP CRS 298°	Rwy Idg TDZE Apt Elev	4502 763 763
--	------------------------	-----------------------------	---

VOR RWY 27

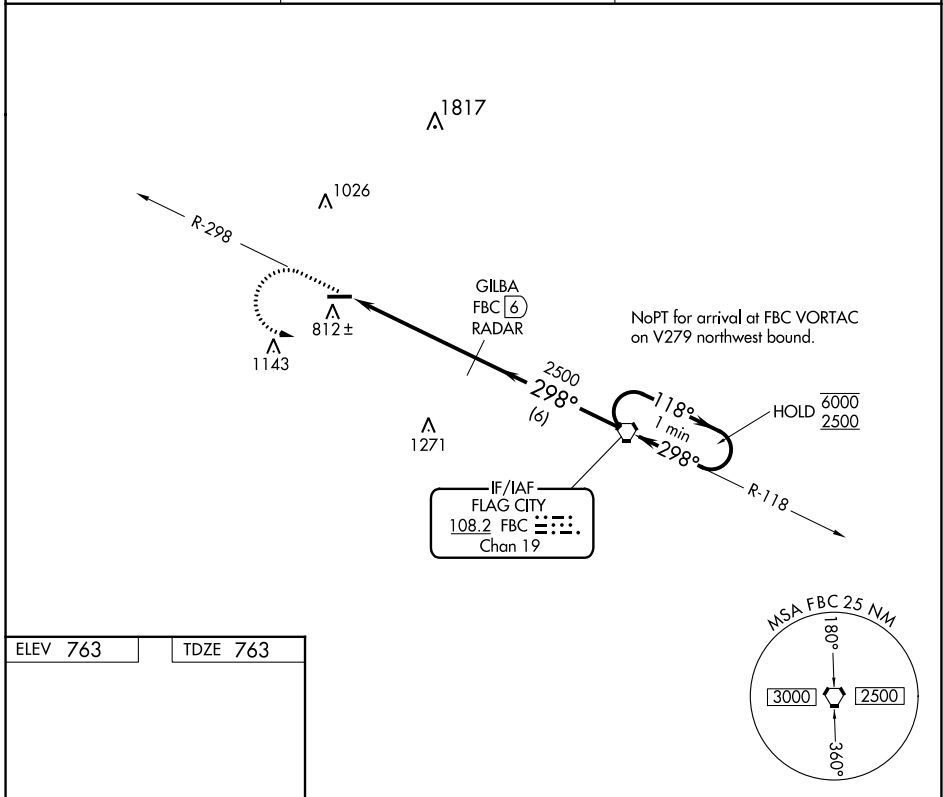
PUTNAM COUNTY (OWX)

RADAR or DME required.

▼ Rwy 27 helicopter visibility reduction below 1 SM NA.
 ▲ NA Straight-in, Circling Rwy 27 NA at night.

MISSED APPROACH: Climb to 2500 on FBC VORTAC R-298 then left turn direct FBC VORTAC and hold.

AWOS-3 120.525	TOLEDO APP CON 120.8 317.55	UNICOM 122.7 (CTAF) 0
--------------------------	---------------------------------------	---------------------------------



ELEV 763	TDZE 763
REIL Rwys 9 and 27 MRL Rwy 9-27	
FAF to MAP 5 NM	
Knots	60 90 120 150 180
Min:Sec	5:00 3:20 2:30 2:00 1:40

2500	FBC	GILBA FBC (6) RADAR	FBC VORTAC	One Minute Holding Pattern
FBC R-298	298°	2500	298°	118° → 6000 ← 298° 2500
FBC (11)	≤ 3.18° TCH 44	5 NM	6 NM	
CATEGORY	A	B	C	D
S-27	1220-1	457 (500-1)	NA	NA
CIRCLING	1220-1	457 (500-1)	NA	NA

EC-2, 11 JUL 2024 to 08 AUG 2024

EC-2, 11 JUL 2024 to 08 AUG 2024