

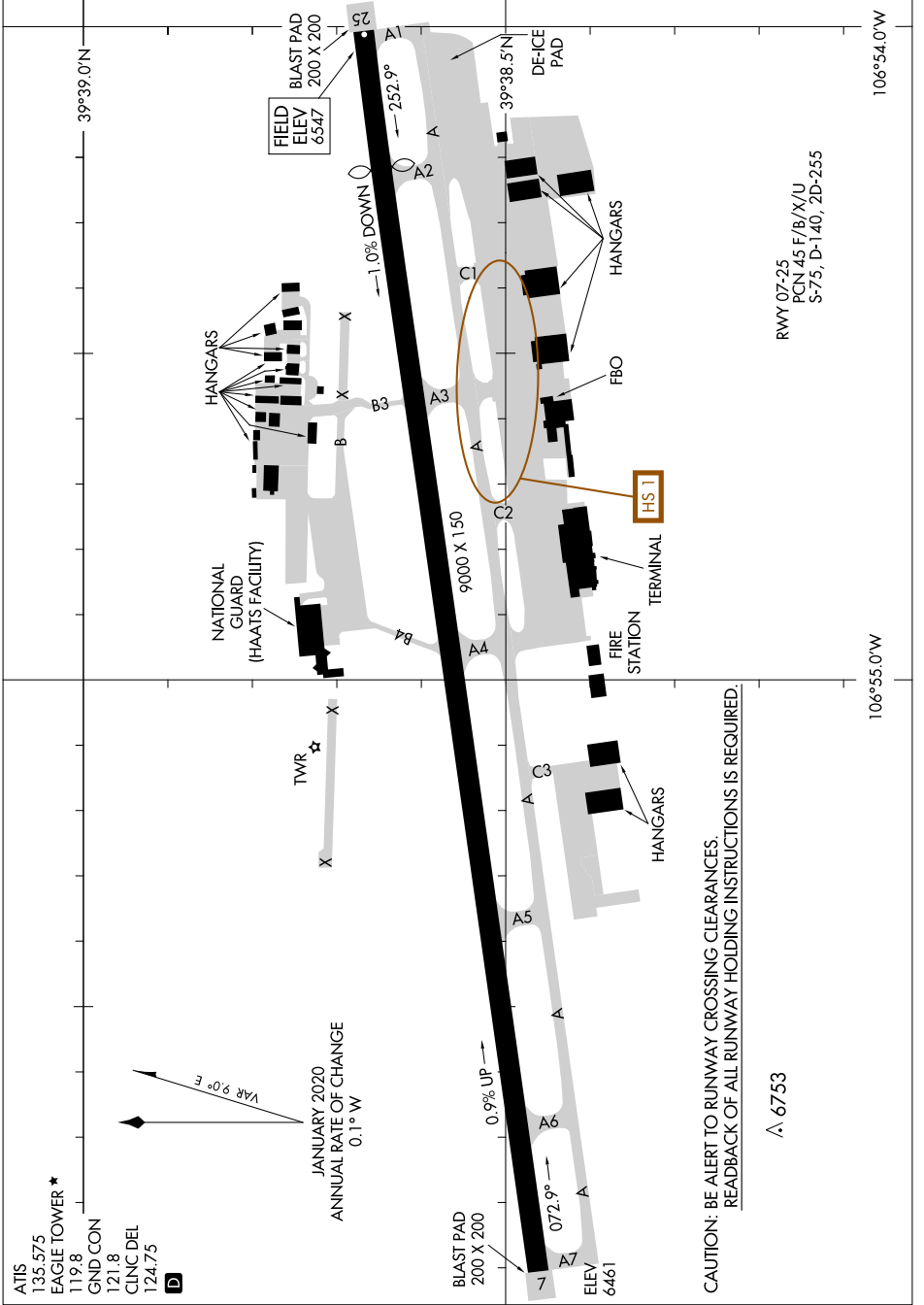
22251

# AIRPORT DIAGRAM

EAGLE COUNTY RGNL (E/GE)  
EAGLE, COLORADO

AL-6403 (FAA)

SW-1, 11 JUL 2024 to 08 AUG 2024



RWY 07-25  
PCN 45 F/X/U  
S-75, D-140, 2D-255

CAUTION: BE ALERT TO RUNWAY CROSSING CLEARANCES.  
READBACK OF ALL RUNWAY HOLDING INSTRUCTIONS IS REQUIRED.

△ 6753

# AIRPORT DIAGRAM

22251

EAGLE, COLORADO  
EAGLE COUNTY RGNL (E/GE)

SW-1, 11 JUL 2024 to 08 AUG 2024