

VOR/DME FZT <b>111.4</b> Chan 51	APP CRS <b>121°</b>	Rwy Idg TDZE Apt Elev	<b>5006</b> <b>678</b> <b>678</b>
--	------------------------	-----------------------------	---

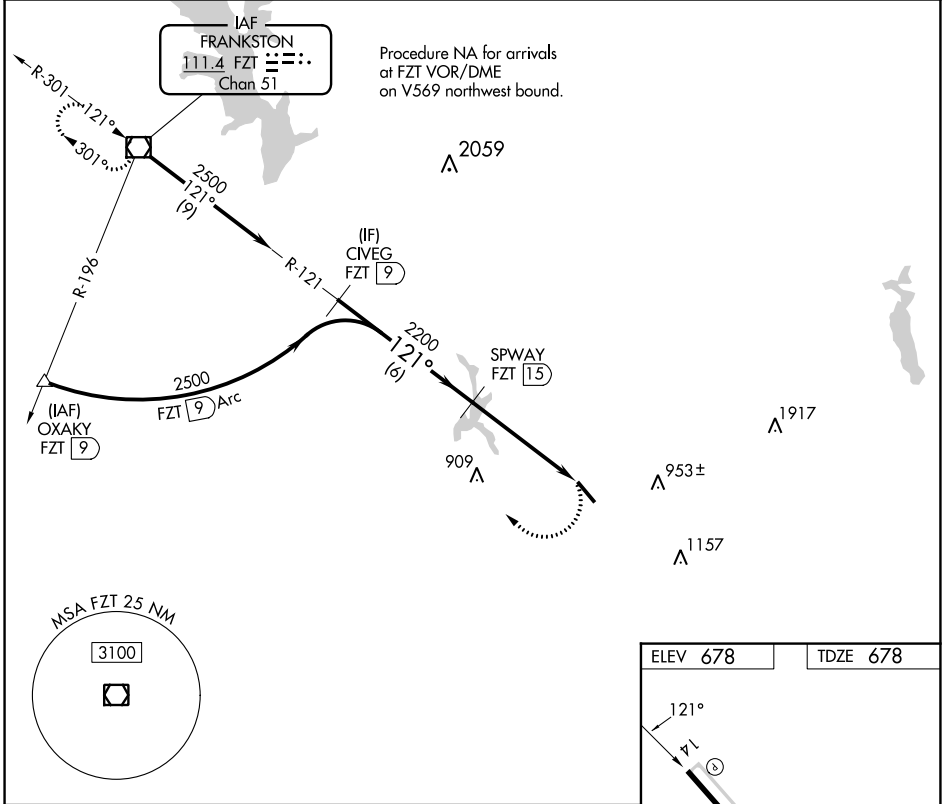
# VOR RWY 14

CHEROKEE COUNTY (JSO)

DME required.

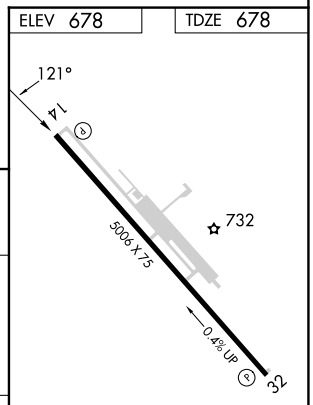
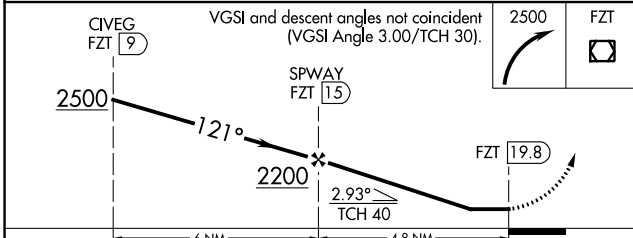
⚠ MISSED APPROACH: Climbing right turn to 2500 direct FZT VOR/DME and hold.

AWOS-3 <b>119.075</b>	LONGVIEW APP CON * <b>128.75 379.15</b>	UNICOM <b>122.7 (CTAF) 0</b>
--------------------------	--	---------------------------------



SC-5, 11 JUL 2024 to 08 AUG 2024

SC-5, 11 JUL 2024 to 08 AUG 2024



CATEGORY	A	B	C	D
S-14	1080-1	402 (500-1)	1080-1¼ 402 (500-1¼)	NA
CIRCLING	1080-1 402 (500-1)	1140-1 462 (500-1)	1280-1¾ 602 (700-1¾)	NA

ELEV 678 | TDZE 678

REIL Rwy 14 0  
MIRL Rwy 14-32 0