

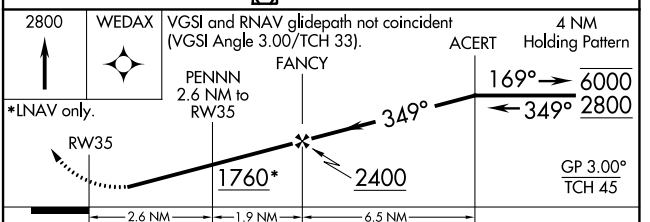
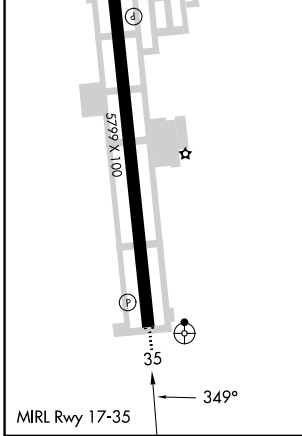
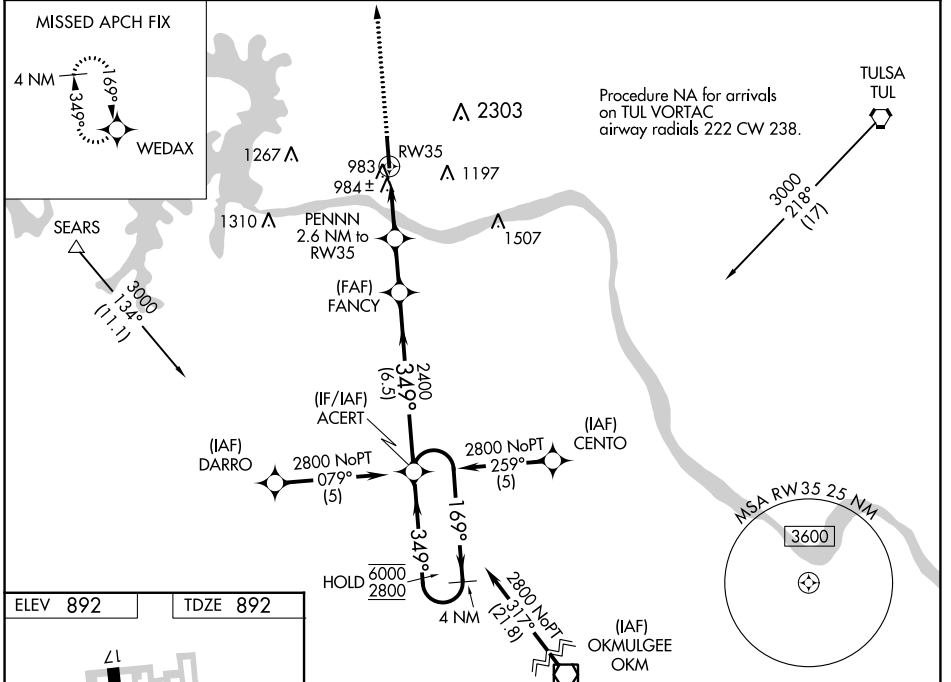
WAAS CH 57912 W35A	APP CRS 349°	Rwy Idg TDZE 892 Apt Elev 892	5799
--	------------------------	---	-------------

RNAV (GPS) RWY 35

WILLIAM R POGUE MUNI (OWP)

RNP APCH. ▼ Rwy 35 helicopter visibility reduction below 1 SM NA. For uncompensated Baro-VNAV systems, LNAV/VNAV NA below -16°C or above 54°C. Procedure NA at night. Circling NA for Cat C east of Rwy 17-35. Inop table does not apply.	ODALS 	MISSED APPROACH: Climb to 2800 direct WEDAX and hold.
--	-----------	---

AWOS-3T 118.325	TULSA APP CON 124.0 338.3	UNICOM 122.7 (CTAF)
---------------------------	-------------------------------------	-------------------------------



CATEGORY	A	B	C	D
LPV DA	1202-1 310 (400-1)			NA
LNAV/VNAV DA	1317-1½ 425 (500-1½)			NA
LNAV MDA	1240-1 348 (400-1)			NA
CIRCLING	1440-1 548 (600-1)	1440-1½ 548 (600-1½)		NA

SC-1, 11 JUL 2024 to 08 AUG 2024

SC-1, 11 JUL 2024 to 08 AUG 2024