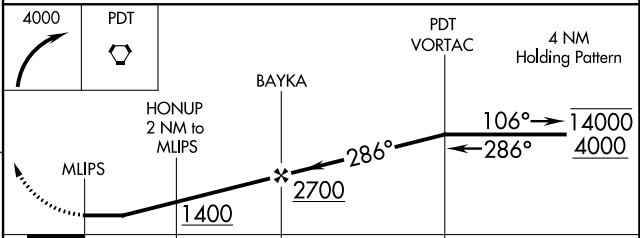
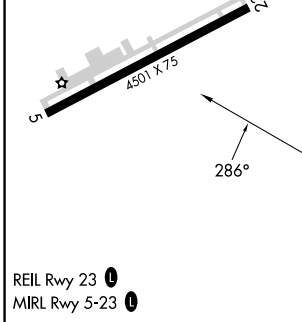
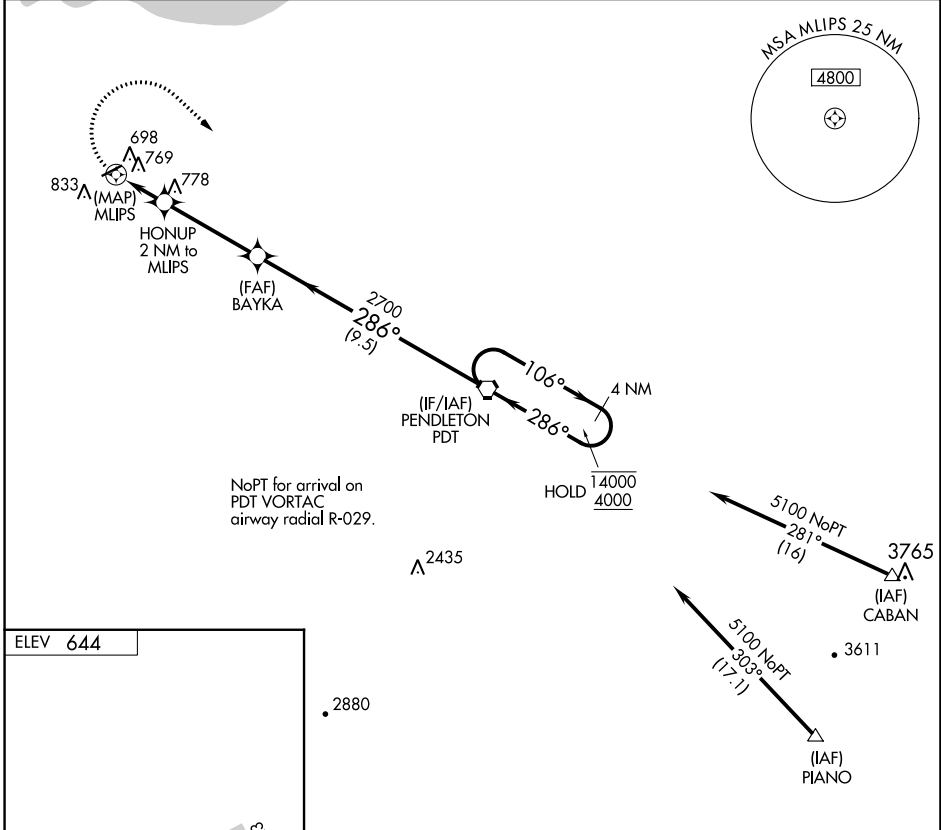


RNAV (GPS)-B HERMISTON MUNI (H.R.I)

APP CRS 286°	Rwy Idg TDZE Apt Elev	N/A N/A 644
------------------------	-----------------------------	--

RNP APCH. ▽	MISSED APPROACH: Climbing right turn to 4000 direct PDT VORTAC and hold.
Circling Rwy 5 NA at night.	

ASOS 135.225	SPOKANE APP CON * 133.15 379.15	UNICOM 122.8 (CTAF) 0
------------------------	---	---------------------------------



CATEGORY	A	B	C	D
C CIRCLING	1140-1 496 (500-1)		1140-1½ 496 (500-1½)	1260-2 616 (700-2)

NW-1, 11 JUL 2024 to 08 AUG 2024

NW-1, 11 JUL 2024 to 08 AUG 2024