

COPTER RNAV (GPS) X RWY 31

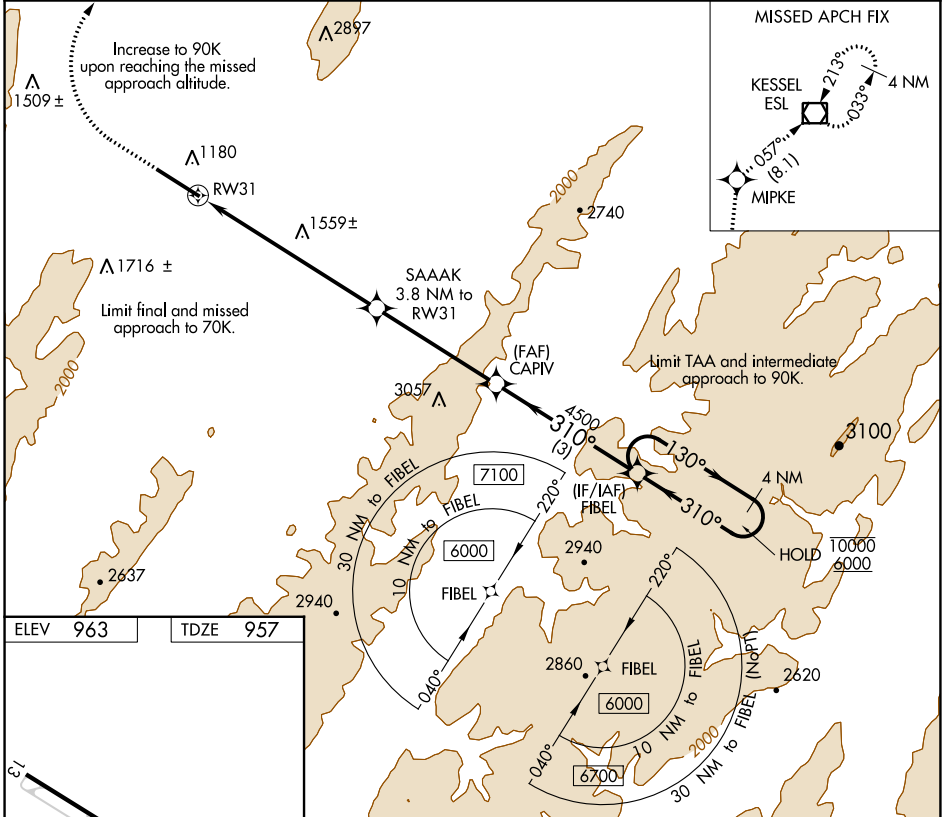
GRANT COUNTY (W99)

APP CRS 310°	Rwy ldg 5000
	TDZE 957
	Apt Elev 963

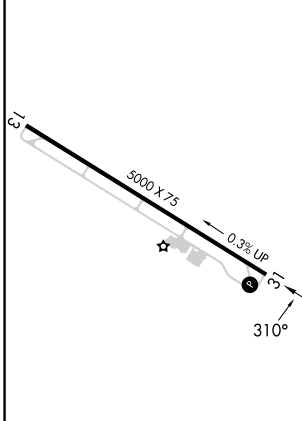
RNP APCH.
 ▼
 ▲ NA When local altimeter setting not received, procedure NA.
 ❄️ -8°C

MISSED APPROACH: Climb to 1380 then climbing right turn to 5000 direct MIPKE and on track 057° to ESL VOR/DME and hold.

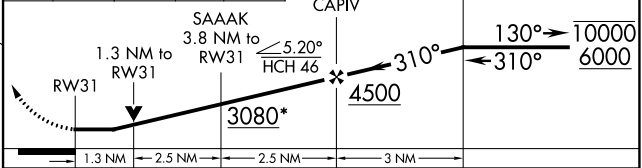
AWOS-3 124.475	WASHINGTON CENTER 133.55 322.55	UNICOM 122.8 (CTAF) 0
--------------------------	---	---------------------------------



ELEV 963	TDZE 957
----------	----------



1380	5000	MIPKE	tr 057°	ESL	VGSI and descent angles not coincident (VGSI Angle 6.50/TCH 46).
------	------	-------	---------	-----	--



REIL Rws 13 and 31 0	MIRL Rwy 13-31 0
CATEGORY	COPTER
LNAV MDA	1880-3/4 923 (1000-3/4)

COPTER RNAV (GPS) X RWY 31

NE-4, 11 JUL 2024 to 08 AUG 2024

NE-4, 11 JUL 2024 to 08 AUG 2024