

LOC I-IVI <b>111.1</b>	APP CRS <b>058°</b>	Rwy Idg TDZE Apt Elev	<b>5500</b> <b>2402</b> <b>2419</b>
---------------------------	------------------------	-----------------------------	---

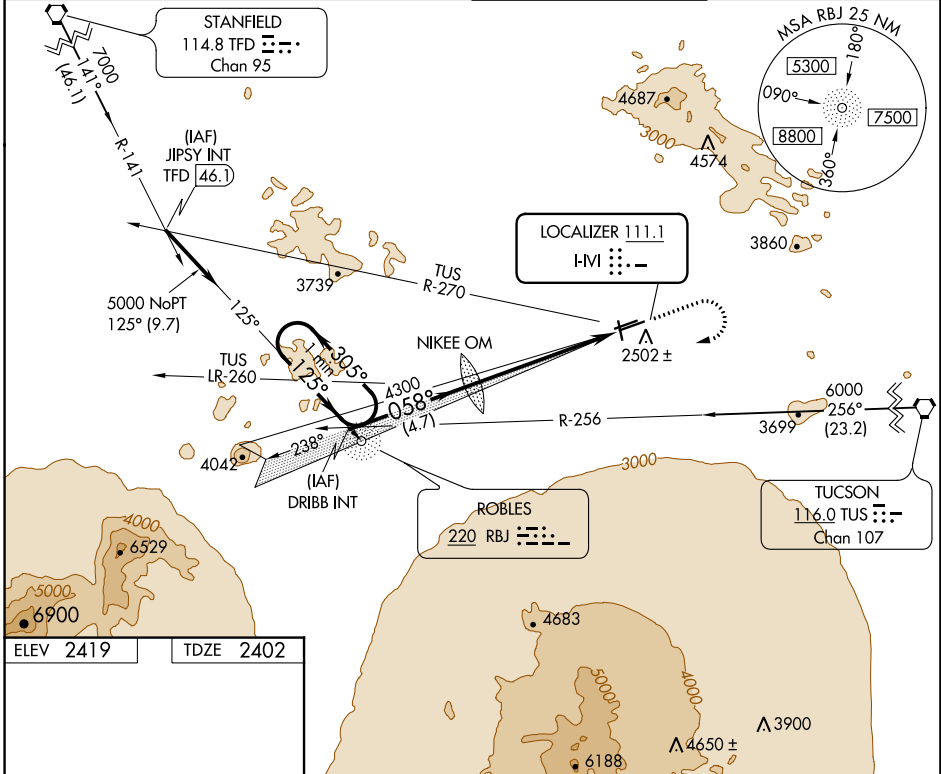
# ILS or LOC RWY 6R

RYAN FLD (RYN)

ADF required.  
 ⚠️ NA Circling NA for Cat D north of Rwy 24R and east of Rwy 15.

MISSED APPROACH: Climb to 3000, then climbing right turn to 5000 via direct RBJ NDB and 305° bearing RBJ to DRIBB INT and hold.

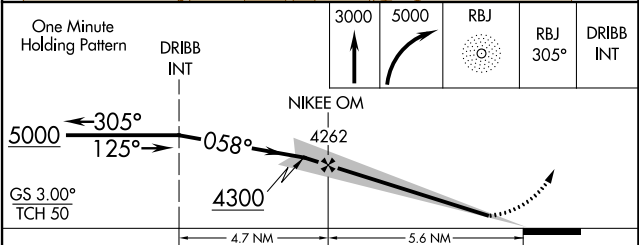
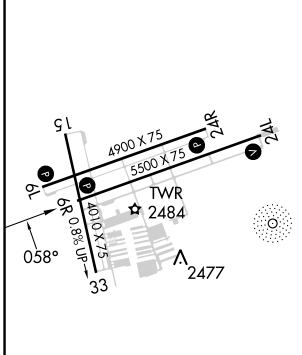
ATIS <b>133.35</b>	TUCSON APP CON <b>128.5 273.6</b>	RYAN TOWER ★ <b>125.8 (CTAF) 0</b>	GND CON <b>118.2</b>
-----------------------	--------------------------------------	---------------------------------------	-------------------------



SW-4, 11 JUL 2024 to 08 AUG 2024

SW-4, 11 JUL 2024 to 08 AUG 2024

ELEV 2419	TDZE 2402
-----------	-----------



MIRL Rwy 6L-24R REIL Rwys 6R and 6L MIRL Rwys 6R-24L and 15-33	FAF to MAP 5.1 NM	3000	5000	RBJ	RBJ 305°	DRIBB INT
Knots	60 90 120 150 180					
Min:Sec	5:06 3:24 2:33 2:02 1:42					
☑️ CIRCLING	2960-1 541 (600-1)	2900-1 498 (500-1)	2900-1¼ 498 (500-1¼)	3040-1¾ 621 (700-1¾)	2900-1½ 498 (500-1½)	3320-3 901 (1000-3)