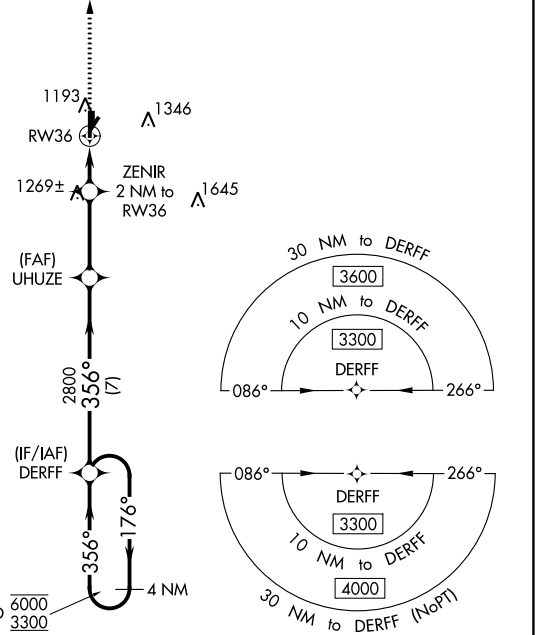
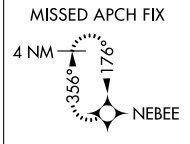


WAAS CH <b>48930</b> <b>W36A</b>	APP CRS <b>356°</b>	Rwy Idg TDZE <b>1140</b> Apt Elev <b>1152</b>	<b>5101</b>
----------------------------------------	------------------------	-----------------------------------------------------	-------------

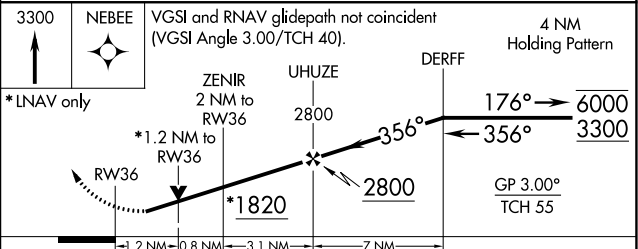
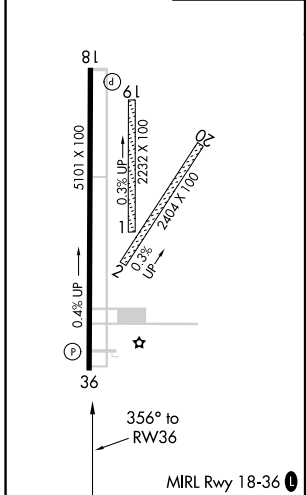
# RNAV (GPS) RWY 36

CHICKASHA MUNI (CHK)

RNP APCH. ▼ Circling NA to Rwy 1, 2, 19 and 20. Rwy 36 helicopter visibility reduction below ¾ SM NA. For uncompensated Baro-VNAV systems, LNAV/VNAV NA below -17°C or above 54°C.		MISSED APPROACH: Climb to 3300 direct NEBEE and hold.
AWOS-3 <b>118,175</b>	OKE CITY APP CON <b>124.6 266.8</b>	UNICOM <b>123.0 (CTAF) 0</b>



ELEV 1152	TDZE 1140
-----------	-----------



CATEGORY	A	B	C	D
LPV DA	1390-¾		250 (300-¾)	NA
LNAV/ VNAV DA	1450-1		310 (300-1)	NA
LNAV MDA	1580-1	440 (500-1)	1580-1¼ 440 (500-1¼)	NA
<b>CIRCLING</b>	1600-1 448 (500-1)	1620-1 468 (500-1)	1700-1½ 548 (600-1½)	NA

SC-1, 11 JUL 2024 to 08 AUG 2024

SC-1, 11 JUL 2024 to 08 AUG 2024