

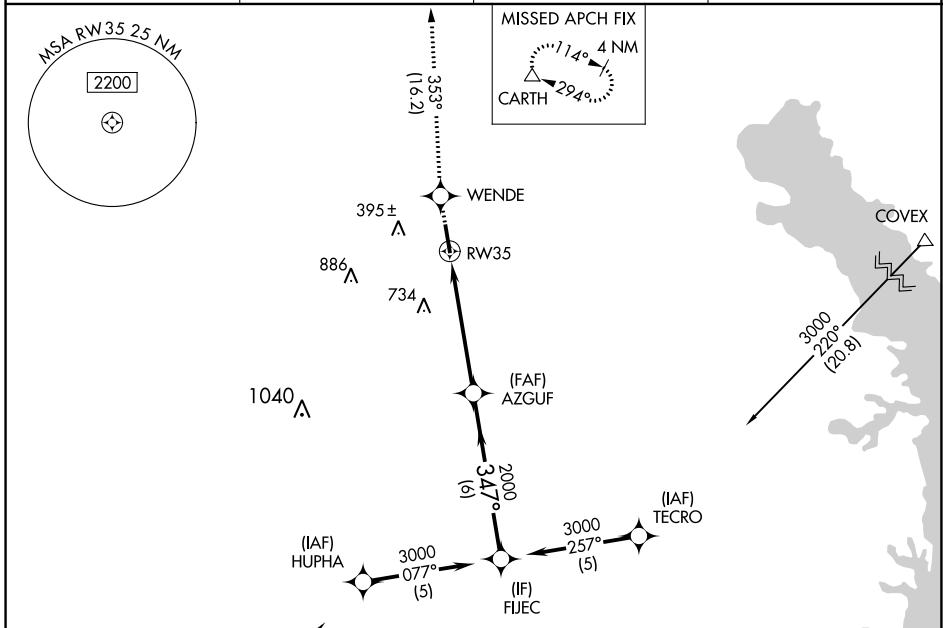
APP CRS	Rwy Idg	<b>5501</b>
<b>347°</b>	TDZE	<b>308</b>
	Apt Elev	<b>319</b>

# RNAV (GPS) RWY 35

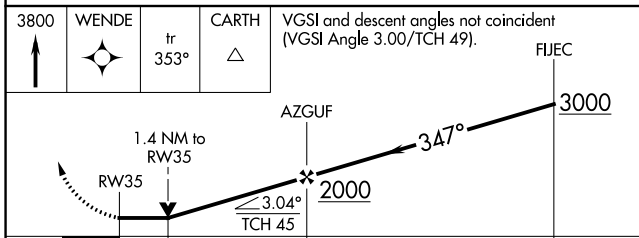
CENTER MUNI (F17)

RNP APCH.	MISSED APPROACH: Climb to 3800 direct WENDE and on track 353° to CARTH and hold.
<p>▼ Rwy 35 helicopter visibility reduction below 3/4 SM NA.</p> <p>▲ NA Circling Rwy 35 NA at night.</p>	

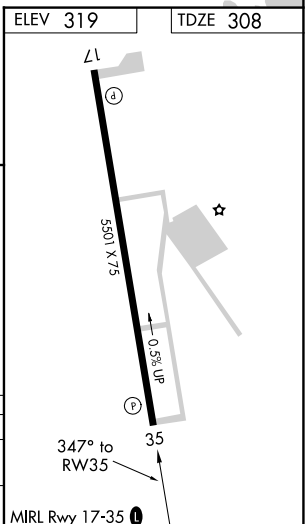
AWOS-3PT <b>128.775</b>	OCH AWOS-3 <b>135.625</b>	FORTH WORTH CENTER <b>126.325 346.25</b>	UNICOM <b>122.8 (CTAF) 0</b>
----------------------------	------------------------------	---	---------------------------------



3800	WENDE	CARTH	VGSI and descent angles not coincident (VGSI Angle 3.00/TCH 49).	FUJEC
↑	✧	tr 353°		



CATEGORY	A	B	C	D
LNVA MDA	960-1 652 (700-1)		960-1 3/4 652 (700-1 3/4)	NA
CIRCLING	960-1 641 (700-1)		1160-2 1/2 841 (900-2 1/2)	NA



SC-5, 11 JUL 2024 to 08 AUG 2024

SC-5, 11 JUL 2024 to 08 AUG 2024