

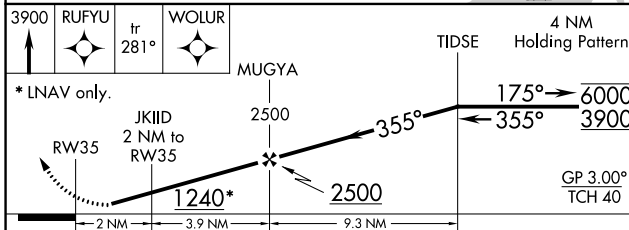
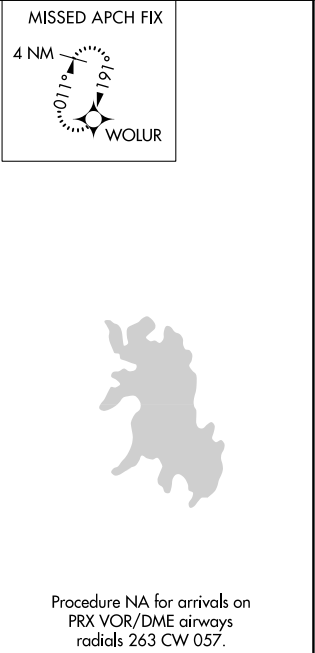
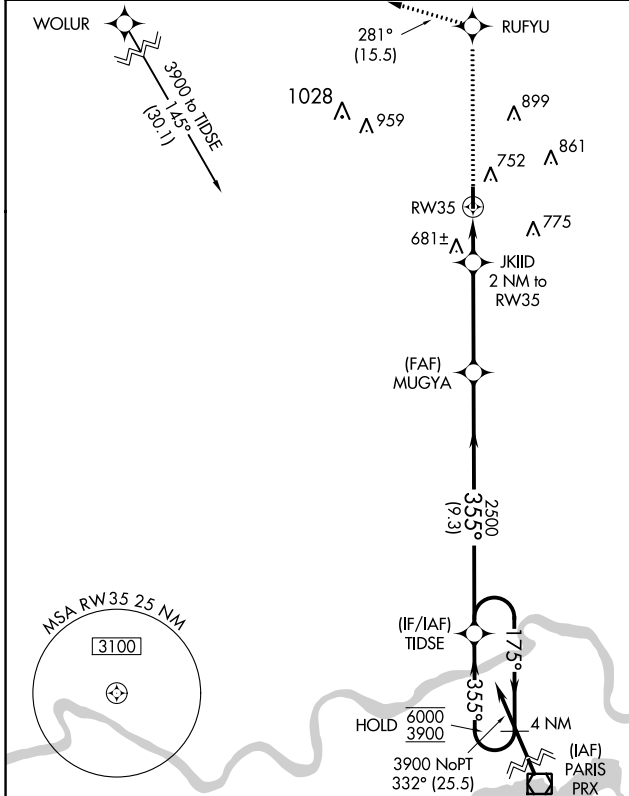
WAAS CH 70428 W35A	APP CRS 355°	Rwy Idg TDZE Apt Elev	4001 576 577
--	------------------------	-----------------------------	---

RNAV (GPS) RWY 35

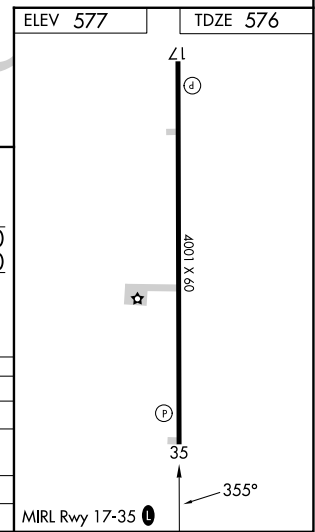
ANTLERS MUNI (80F)

RNP APCH	<p>⚠ Circling to Rwy 17 NA at night. Rwy 35 helicopter visibility reduction below 3/4 SM NA. Baro-VNAV NA. Use Paris altimeter setting; when not received, use Durant altimeter setting and increase LPV and LNAV/VNAV DA to 937 feet, increase all MDA 40 feet.</p>	<p>MISSED APPROACH: Climb to 3900 direct RUFYU and on track 281° to WOLUR and hold.</p>
----------	--	---

PRX AWOS-3PT 119.675	FORT WORTH CENTER 124.875 370.95	CTAF 122.9
--------------------------------	--	----------------------



CATEGORY	A	B	C	D
LPV DA	911-1 1/8	335 (400-1 1/8)		NA
LNAV/VNAV DA	911-1 1/8	335 (400-1 1/8)		NA
LNAV MDA	1020-1	444 (500-1)		NA
CIRCLING	1140-1	563 (600-1)		NA



SC-1, 11 JUL 2024 to 08 AUG 2024

SC-1, 11 JUL 2024 to 08 AUG 2024