

APP CRS	Rwy Idg	<b>4000</b>
<b>037°</b>	TDZE	<b>753</b>
	Apt Elev	<b>758</b>

# RNAV (GPS) RWY 4

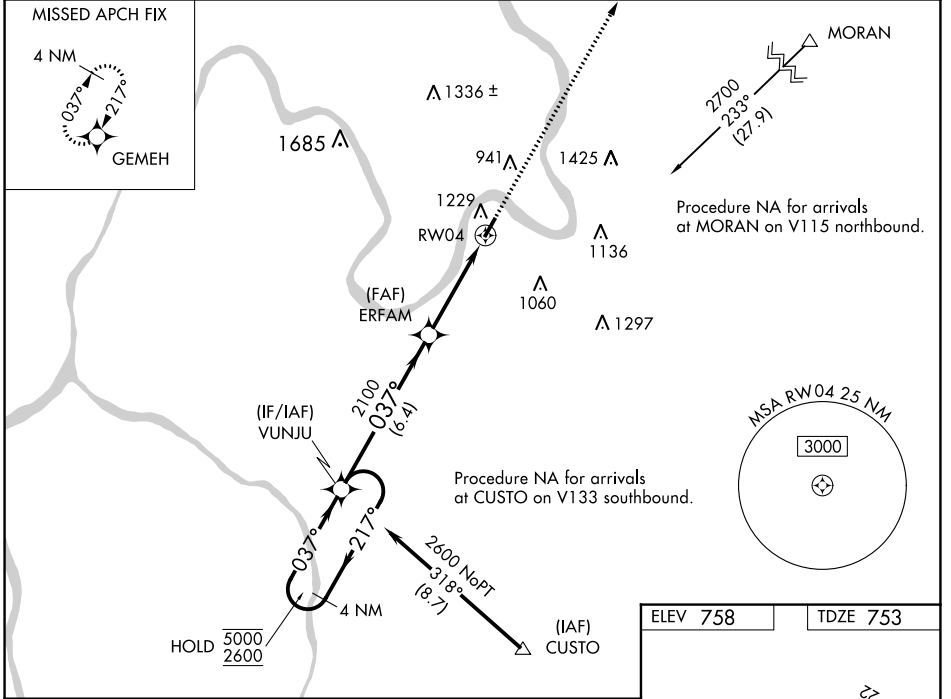
JACKSON COUNTY (I18)

RNP APCH - GPS.

**▽** Rwy 4 helicopter visibility reduction below 1 SM NA. When local altimeter setting not received, use Point Pleasant altimeter setting and increase all MDA 60 feet; increase LNAV Cat C visibility  $\frac{1}{8}$  SM and Circling Cat C visibility  $\frac{1}{4}$  SM. Straight-in Rwy 4 NA at night, Circling Rwy 4 NA at night.

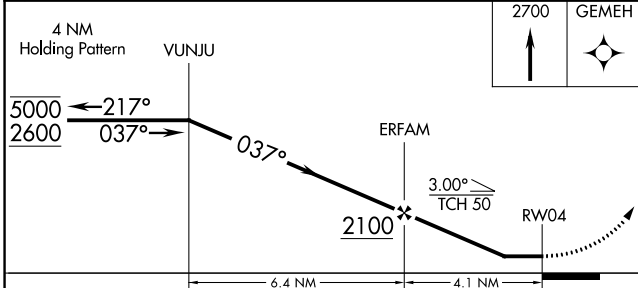
**MISSED APPROACH:**  
Climb to 2700 direct GEMEH and hold.

AWOS-2 <b>121.3</b>	HUNTINGTON APP CON <b>128.4 270.1</b>	UNICOM <b>122.8 (CTAF) 0</b>
------------------------	--	---------------------------------

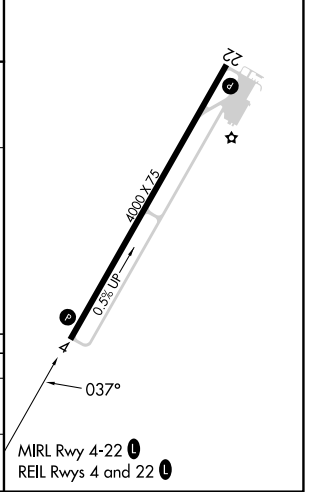


NE-4, 11 JUL 2024 to 08 AUG 2024

NE-4, 11 JUL 2024 to 08 AUG 2024



ELEV 758	TDZE 753
----------	----------



CATEGORY	A	B	C	D
LNAV MDA	1400-1	647 (700-1)	1400- $1\frac{1}{8}$ 647 (700- $1\frac{1}{8}$ )	NA
CIRCLING	1600- $1\frac{1}{4}$	842 (900- $1\frac{1}{4}$ )	1600- $2\frac{1}{2}$ 842 (900- $2\frac{1}{2}$ )	NA