

VOR/DME BJC 115.4 Chan 101	APP CRS 203°	Rwy Idg TDZE Apt Elev	N/A N/A 5119
--	------------------------	-----------------------------	---

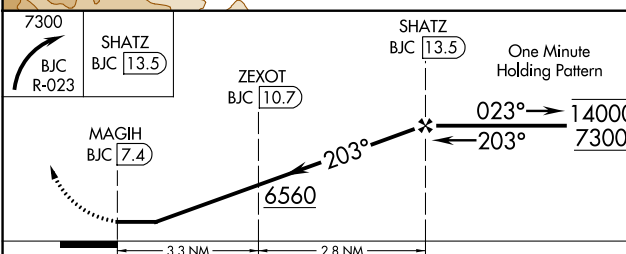
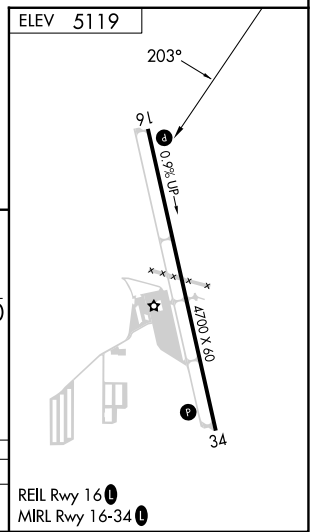
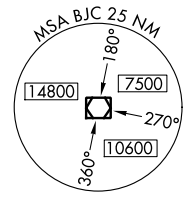
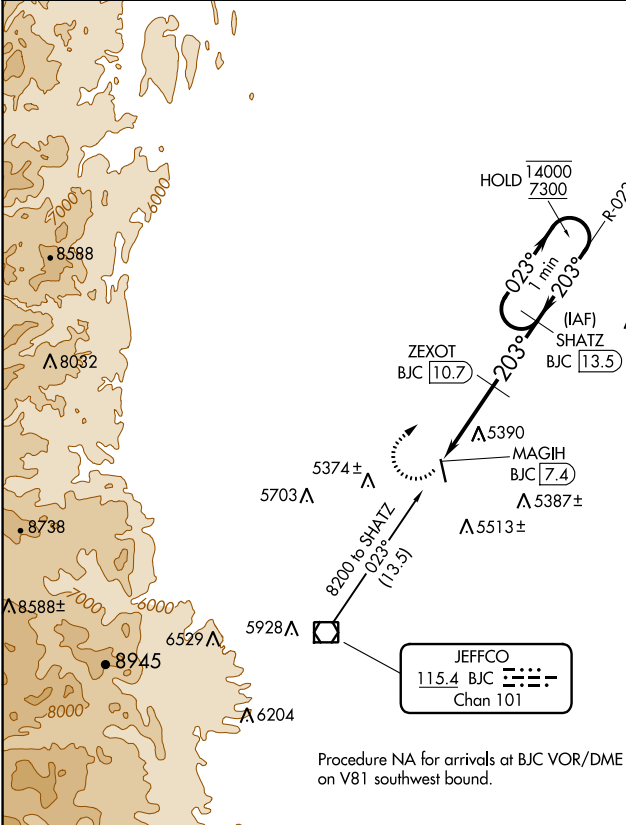
VOR-A
ERIE MUNI (EIK)

DME required.

⚠

MISSED APPROACH: Climbing right turn to 7300 on BJC VOR/DME R-023 to SHATZ/13.5 DME and hold, continue climb-in-hold to 7300.

AWOS-3PT 133.825	DENVER APP CON 125.12 263.02	UNICOM 123.0 (CTAF)
----------------------------	--	-------------------------------



CATEGORY	A	B	C	D
CIRCLING	5700-1 581 (600-1)	5880-1 761 (800-1)	5880-2¼ 761 (800-2¼)	NA

SW-1, 11 JUL 2024 to 08 AUG 2024

SW-1, 11 JUL 2024 to 08 AUG 2024

REIL Rwy 16
MIRL Rwy 16-34