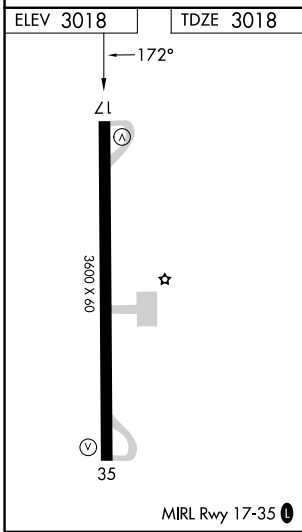
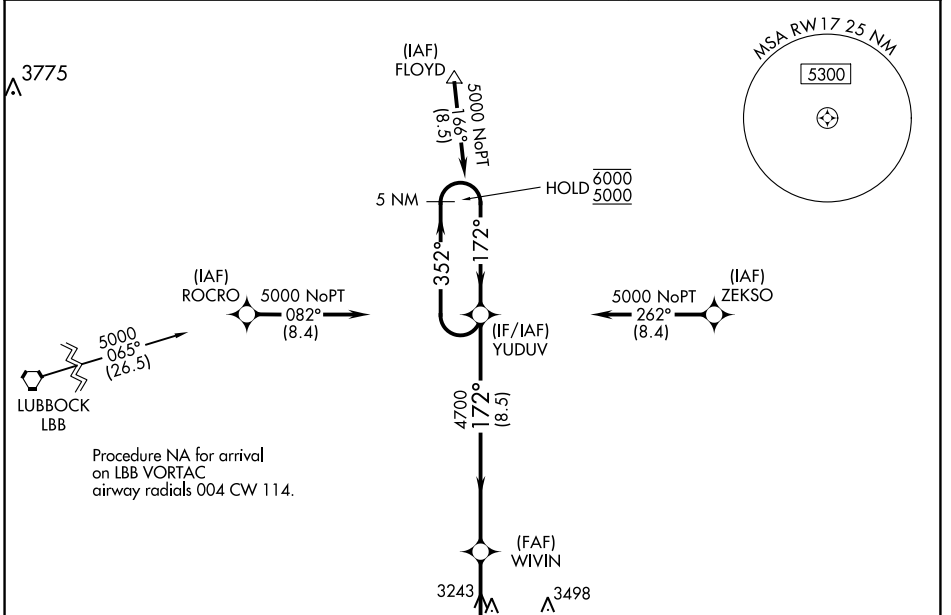


WAAS CH <b>82722</b> <b>W17A</b>	APP CRS <b>172°</b>	Rwy Idg TDZE Apt Elev	<b>3600</b> <b>3018</b> <b>3018</b>
--	------------------------	-----------------------------	---

# RNAV (GPS) RWY 17

CROSBYTON MUNI (8F3)

RNP APCH.		MISSED APPROACH: Climb to 5000 direct CEGUT and hold.
<p>Procedure NA at night.</p> <p>Rwy 17 helicopter visibility reduction below 1 SM NA.</p> <p>Use Lubbock altimeter setting.</p>		
LBB ASOS <b>125.3</b>	LUBBOCK APP CON <b>119.2 351.8</b>	UNICOM <b>122.8 (CTAF) 0</b>



ELEV 3018	TDZE 3018	MISSED APCH FIX CEGUT	
3551	5000	WIVIN	YUDUV
3280	CEGUT	4700	6000 / 5000
RWY 17		5 NM Holding Pattern	
3.9 NM		8.5 NM	
35			
CATEGORY	A	B	C
LP MDA	3660-1	642 (700-1)	NA
LNAV MDA	3700-1	682 (700-1)	NA

SC-2, 11 JUL 2024 to 08 AUG 2024

SC-2, 11 JUL 2024 to 08 AUG 2024