

# NDB RWY 18

CLARK RGNL (JVY)

LOM JV <b>331</b>	APP CRS <b>182°</b>	Rwy Idg <b>7000</b>
		TDZE <b>476</b>
		Apt Elev <b>476</b>

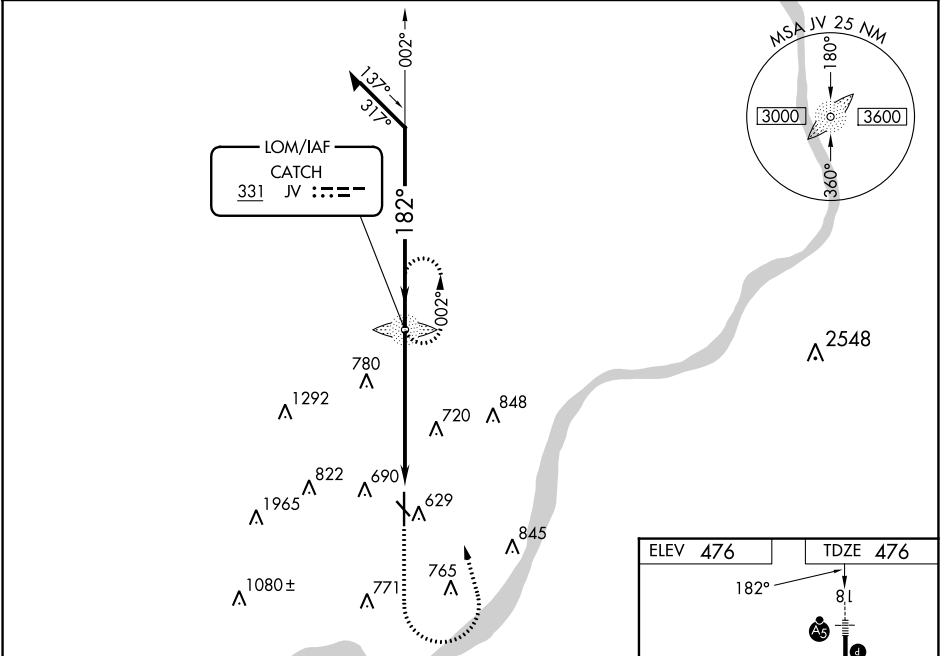
RADAR required for procedure entry.

**▽** Circling NA for Cat D southwest of Rws 14 and 36. Circling Rwy 14, 32 NA at night. For inop ALS, increase S-18 Cats A and B visibility to 1 SM and Cats C and D to 1¼ SM. When local altimeter setting not received, use Louisville Muhammad Ali Intl altimeter setting and increase all MDAs 40 feet and Circling visibility Cat C ½ SM. For inop ALS when using Louisville Muhammad Ali Intl altimeter setting, increase S-18 Cats A and B visibility to 1 SM.



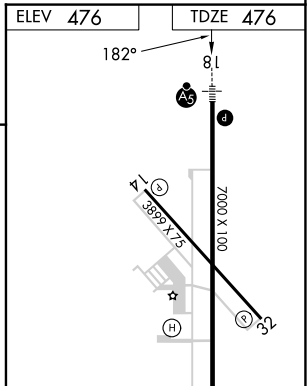
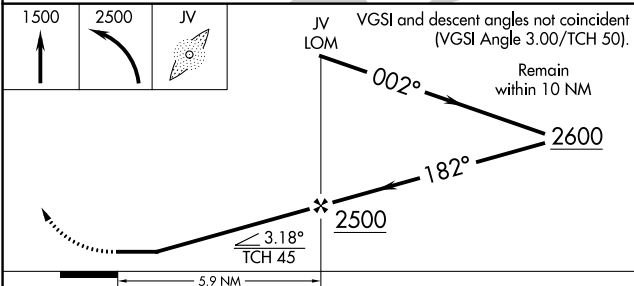
**MISSED APPROACH:** Climb to 1500 then climbing left turn to 2500 direct CATCH LOM and hold.

AWOS-3 <b>118.575</b>	LOUISVILLE APP CON <b>132.075 327.0</b>	CINC DEL <b>118.05</b>	UNICOM <b>122.7 (CTAF) 0</b>
--------------------------	--	---------------------------	---------------------------------



EC-2, 11 JUL 2024 to 08 AUG 2024

EC-2, 11 JUL 2024 to 08 AUG 2024



CATEGORY	A	B	C	D
S-18	1080-¾ 604 (700-¾)	1080-1¾ 604 (700-1¾)	1080-1¾ 604 (700-1¾)	1100-2 624 (700-2)
<b>C</b> CIRCLING	1080-1 604 (700-1)			

REIL Rws 14 and 32				
REIL Rwy 36				36
MIRL Rws 14-32 and 18-36				
FAF to MAP 5.9 NM				
Knots	60	90	120	150
Min:Sec	5:54	3:56	2:57	2:22
			1:58	