

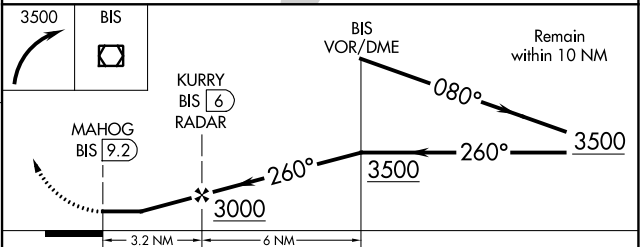
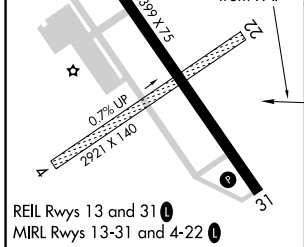
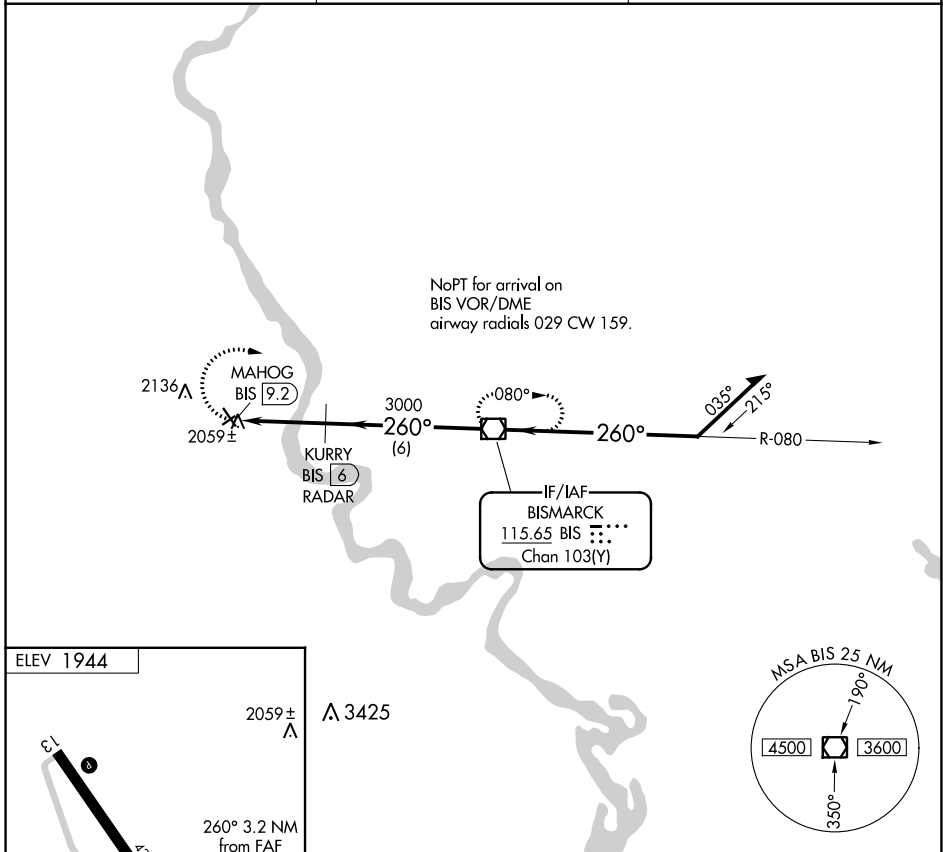
VOR/DME BIS 115.65 Chan 103(Y)	APP CRS 260°	Rwy Idg TDZE Apt Elev N/A N/A 1944
----------------------------------------------------	------------------------	------------------------------------------------------------------------

VOR-A

MANDAN RGNL/LAWLER FLD (Y19)

⚠ DME or RADAR required. When local altimeter setting not received, use Bismarck altimeter setting and increase all MDA 60 feet, and Cat D visibility ¼ mile. Circling to Rwy 4 and 22 NA.
⚠ ASR MISSED APPROACH: Climbing right turn to 3500 direct BIS VOR/DME and hold.

AWOS-3 118,225	BISMARCK APP CON ★ 126.3 298.9	UNICOM 122.8 (CTAF) 0
--------------------------	------------------------------------------	---------------------------------



FAF to MAP 3.2 NM					
Knots	60	90	120	150	180
Min:Sec	3:12	2:08	1:36	1:17	1:04
C CIRCLING	2360-1 416 (500-1)	2460-1 516 (600-1)	2460-1½ 516 (600-1½)	2560-2 616 (700-2)	

VOR-A

NC-1, 11 JUL 2024 to 08 AUG 2024

NC-1, 11 JUL 2024 to 08 AUG 2024