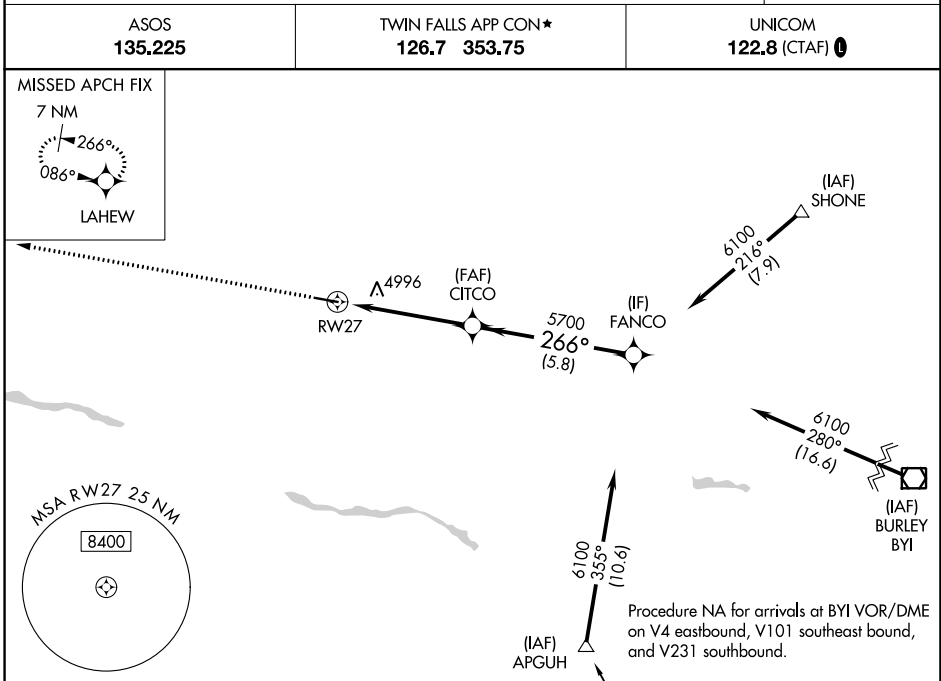


WAAS CH 90514 W27A	APP CRS 266°	Rwy Idg TDZE Apt Elev	5002 4053 4053
--	------------------------	-----------------------------	---

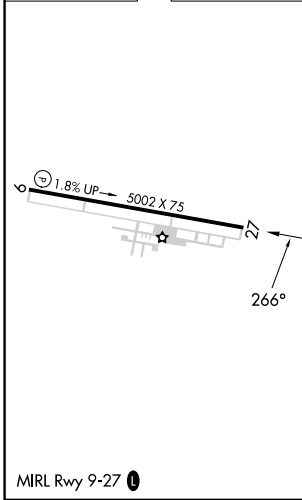
RNAV (GPS) RWY 27

JEROME COUNTY (JER)

RNP APCH.	<p>▼ Circling NA north of Rwy 9 and 27. ▲ Rwy 27 helicopter visibility reduction below ¾ SM NA.</p>	MISSED APPROACH: Climb to 6500 direct LAHEW and hold.
ASOS 135.225		TWIN FALLS APP CON* 126.7 353.75



ELEV 4053	TDZE 4053
-----------	-----------



Procedure NA for arrivals at DRYAD on V484 southeast bound.

6500	LAHEW				
*LNAV only					
	RWY 27	CITCO	FANCO		
	5700	5700	6100		
	3.7 NM	1.3 NM	5.8 NM		
CATEGORY	A	B	C	D	
LPV DA	4403-1		350 (400-1)		
LNAV MDA	5300-1¼ 1247 (1300-1¼)	5300-1½ 1247 (1300-1½)	5300-3	1247 (1300-3)	
C CIRCLING	5300-1¼ 1247 (1300-1¼)	5300-1½ 1247 (1300-1½)	5300-3	1247 (1300-3)	

NW-1, 11 JUL 2024 to 08 AUG 2024

NW-1, 11 JUL 2024 to 08 AUG 2024