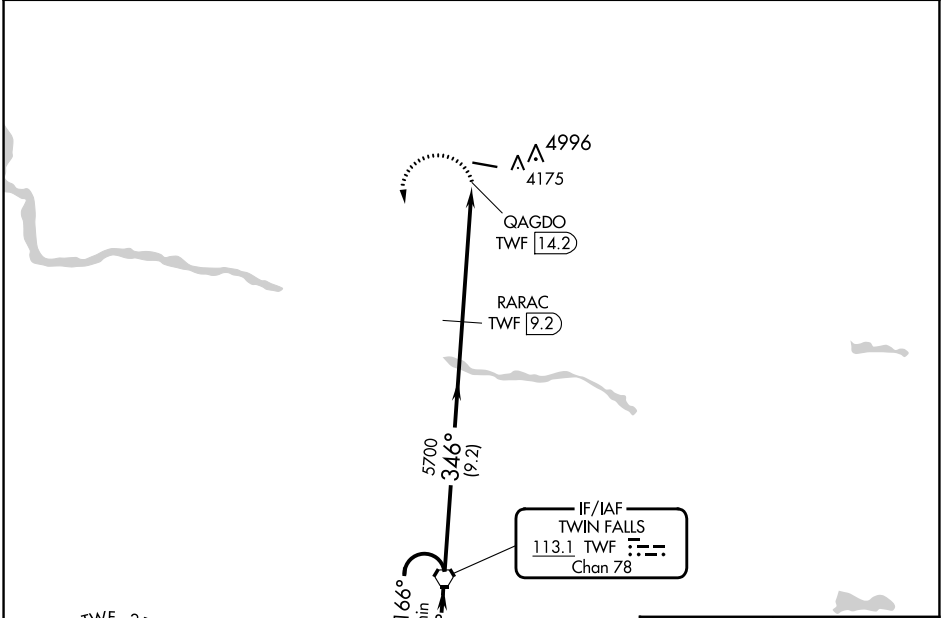


VORTAC TWF <b>113.1</b> Chan <b>78</b>	APP CRS <b>346°</b>	Rwy Idg TDZE Apt Elev	<b>N/A</b> <b>N/A</b> <b>4053</b>
--	------------------------	-----------------------------	---

**VOR-A**  
JEROME COUNTY (JER)

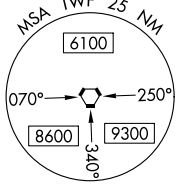
DME required.	MISSED APPROACH: Climbing left turn to 8000 direct TWF VORTAC and hold, continue climb-in-hold to 8000.
<b>▽</b> <b>▲</b> Circling NA north of Rwy 9-27.	

ASOS <b>135,225</b>	TWIN FALLS APP CON* <b>126.7 353.75</b>	UNICOM <b>122.8 (CTAF) 0</b>
------------------------	--	---------------------------------



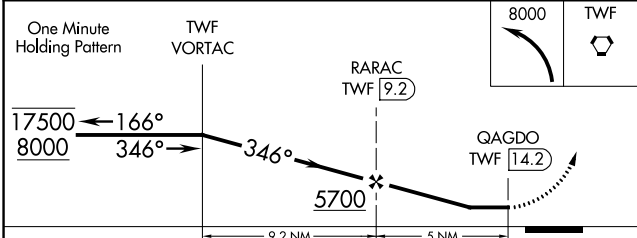
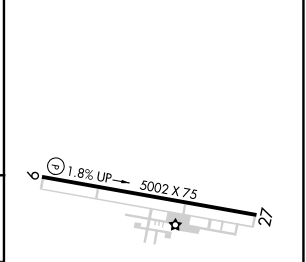
NW-1, 11 JUL 2024 to 08 AUG 2024

NW-1, 11 JUL 2024 to 08 AUG 2024



NoPT for arrival on TWF VORTAC airway radials 097 CW 191.

ELEV 4053



CATEGORY	A	B	C	D
<b>C</b> CIRCLING	4540-1 487 (500-1)	4580-1 527 (600-1)	4580-1½ 527 (600-1½)	4620-2 567 (600-2)

