

APP CRS	Rwy Idg	<b>3301</b>
<b>240°</b>	TDZE	<b>1213</b>
	Apt Elev	<b>1215</b>

# RNAV (GPS) RWY 24

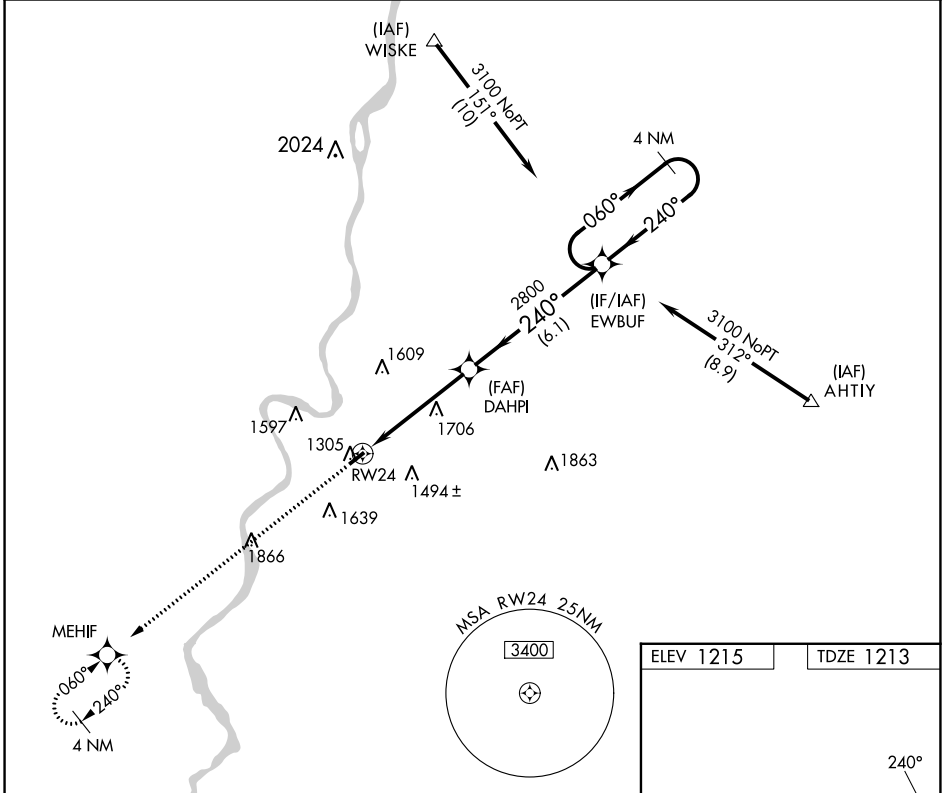
MARSHALL COUNTY (MPG)

RNP APCH.

When local altimeter setting not received, use Wheeling altimeter setting and increase all MDA 60 feet. Rwy 24 helicopter visibility reduction below 3/4 SM NA.

MISSED APPROACH: Climb to 3000 direct MEHIF and hold.

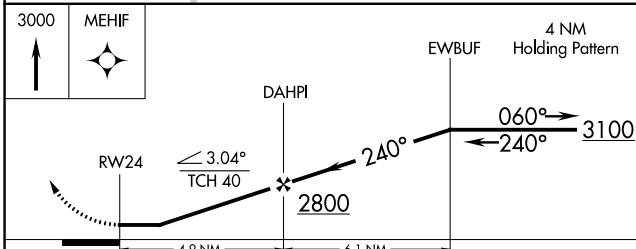
AWOS-3 <b>119.05</b>	CLEVELAND CENTER <b>126.95 239.30</b>	UNICOM <b>122.7 (CTAF) 0</b>
-------------------------	--	---------------------------------



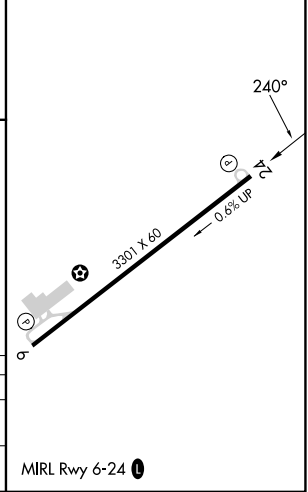
NE-4, 11 JUL 2024 to 08 AUG 2024

NE-4, 11 JUL 2024 to 08 AUG 2024

ELEV 1215	TDZE 1213
-----------	-----------



CATEGORY	A	B	C	D
LNVA MDA	1960-1 747 (800-1)	1960-1¼ 747 (800-1¼)	1960-2¼ 747 (800-2¼)	NA
CIRCLING	1960-1 745 (800-1)	1960-1¼ 745 (800-1¼)	1960-2¼ 745 (800-2¼)	NA



MIRL Rwy 6-24 0