

APP CRS	Rwy Idg	3301
060°	TDZE	1215
	Apt Elev	1215

RNAV (GPS) RWY 6

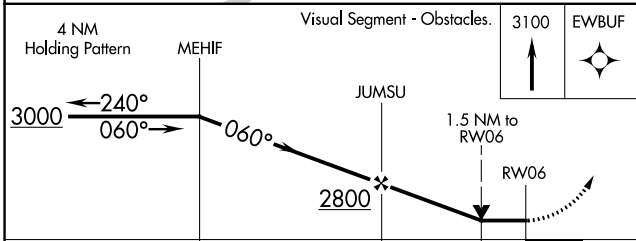
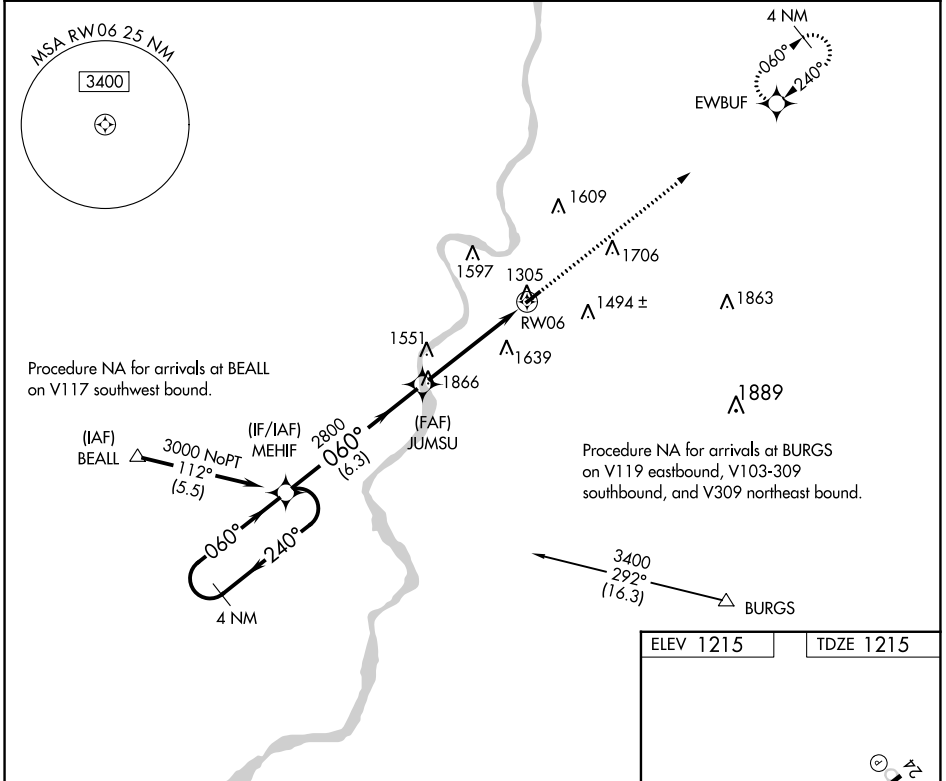
MARSHALL COUNTY (MPG)

RNP APCH

▼ Rwy 6 helicopter visibility reduction below ¾ SM NA. VDP NA when using Wheeling altimeter setting. When local altimeter setting not received, use Wheeling altimeter setting: increase all MDA 60 feet and visibility LNAV Cat C ¼ SM and Circling Cat C ¼ SM.

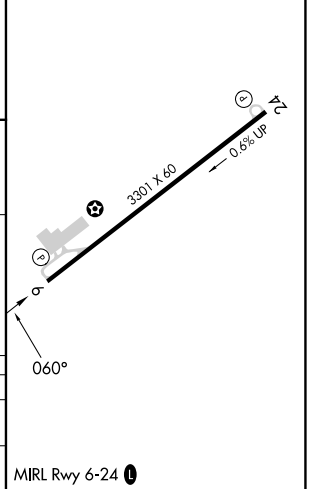
▲ NA MISSED APPROACH: Climb to 3100 direct EWBUF and hold.

AWOS-3 119.05	CLEVELAND CENTER 126.95 239.30	UNICOM 122.7 (CTAF) ①
-------------------------	--	---------------------------------



ELEV 1215	TDZE 1215
-----------	-----------

CATEGORY	A	B	C	D
LNAV MDA	1860-1	645 (700-1)	1860-1 $\frac{7}{8}$ 645 (700-1 $\frac{7}{8}$)	NA
CIRCLING	1860-1	645 (700-1)	1940-2 725 (800-2)	NA



NE-4, 11 JUL 2024 to 08 AUG 2024

NE-4, 11 JUL 2024 to 08 AUG 2024