

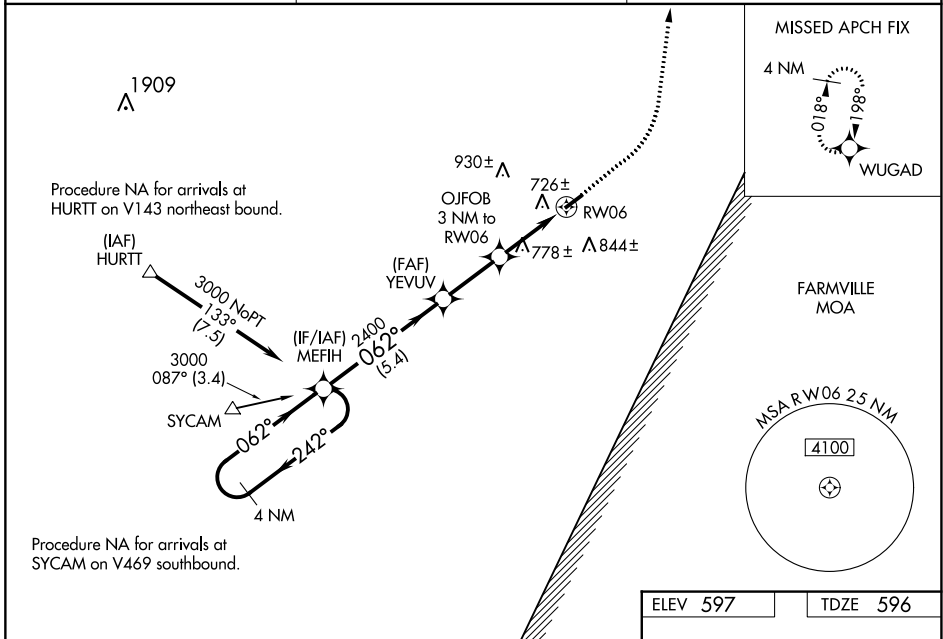
WAAS CH 82333 W06A	APP CRS 062°	Rwy Idg TDZE Apt Elev	3798 596 597
----------------------------------------	------------------------	-----------------------------	-----------------------------------------

RNAV (GPS) RWY 6
BROOKNEAL/CAMPBELL COUNTY (ØV4)

⚠ For uncompensated Baro-VNAV systems, LNAV/VNAV NA below -16°C (3°F) or above 54°C (130°F). DME/DME RNP-0.3 NA. When local altimeter setting not received, use Lynchburg Rgnl/Preston Glenn Fld altimeter setting and increase all DA 81 feet and all MDA 100 feet, increase LPV all Cats visibility 1/8 mile, and increase LNAV/VNAV all Cats visibility 1/4 mile. Rwy 6 helicopter visibility reduction below 3/4 SM NA. Baro VNAV and VDP NA when using Lynchburg Rgnl/Preston Glenn Fld altimeter setting.

MISSED APPROACH: Climb to 1100 then climbing left turn to 3000 direct WUGAD and hold.

AWOS-3 120,575	ROANOKE APP CON 135,0 254,325	UNICOM 122.7 (CTAF) Ø
--------------------------	-----------------------------------------	---------------------------------



NE-3, 11 JUL 2024 to 08 AUG 2024

NE-3, 11 JUL 2024 to 08 AUG 2024

4 NM Holding Pattern		MEFIH	YEVUV	1100	3000	WUGAD
3000 ← 242°		062° →	062°	OJFOB 3 NM to RW06	*1.3 NM to RW06	*LNAV only
GP 3.00° TCH 45		2400	2400	1.7 NM	1.3 NM	RW06
← 5.4 NM		← 2.5 NM				
CATEGORY	A	B	C	D		
LPV DA	868-1	272 (300-1)			NA	
LNAV/VNAV DA	1031-1½	435 (500-1½)			NA	
LNAV MDA	1040-1	444 (500-1)			NA	
CIRCLING	1120-1 523 (600-1)	1180-1 583 (600-1)			NA	

