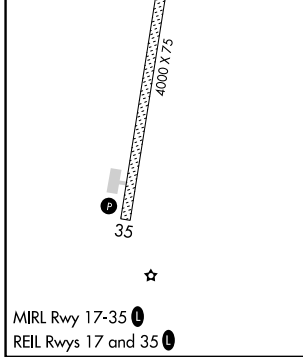
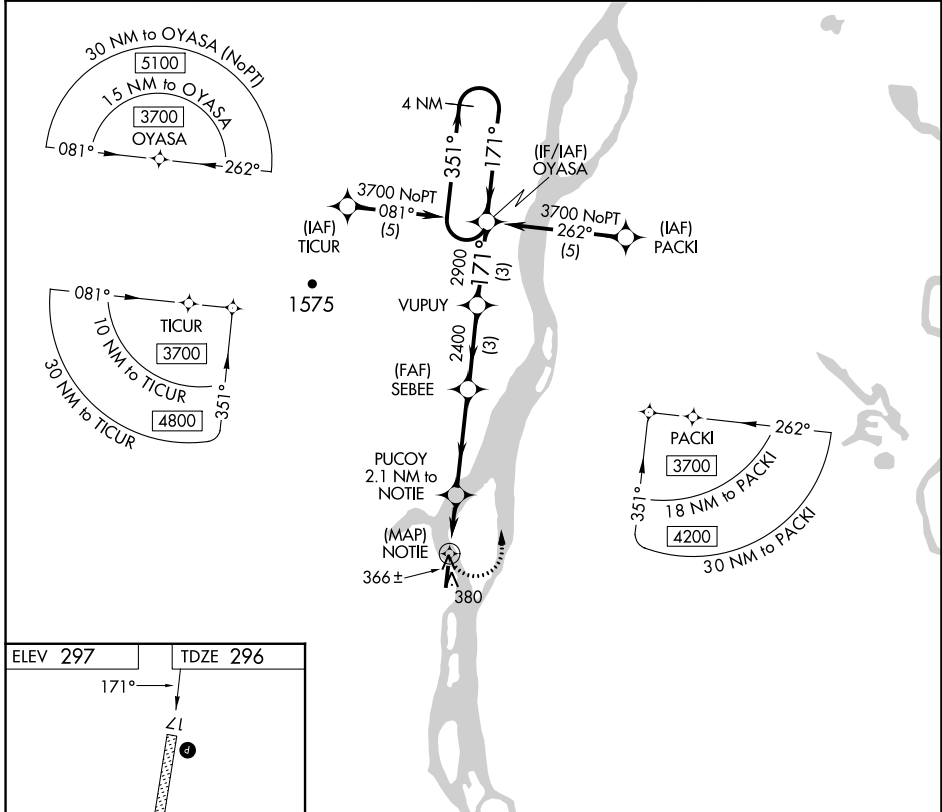


APP CRS	Rwy Idg	4000
171°	TDZE	296
	Apt Elev	297

RNAV (GPS) RWY 17

ANVIK (ANV)(PANV)

RNP APCH - GPS.		MISSED APPROACH: Climbing left turn to 3700 direct OYASA and hold, continue climb-in-hold to 3700.	
		Rwy 17 helicopter visibility reduction below 3/4 SM NA.	
AWOS-3P	ANCHORAGE CENTER	KENAI RADIO	UNICOM
133.55	135.7 335.5	122.4	122.7 (CTAF) 0



3700	OYASA	VGSi and descent angles not coincident (VGSi Angle 3.00/TCH 25).		OYASA	4 NM Holding Pattern	
	PUCOY	SEBEE	VUPLY			
	2.1 NM to NOTIE					
	NOTIE	1140	2400	2900	3700	
		3.06°		171°	351°	
		TCH 35		← 171°		
	0.5	2.1 NM	3.8 NM	3 NM	3 NM	
CATEGORY	A		B		C	D
LNAV MDA	700-1 404 (500-1)		700-1 1/4 404 (500-1 1/4)			
CIRCLING	840-1 543 (600-1)		840-1 1/2 543 (600-1 1/2)		860-2 563 (600-2)	