

APP CRS	Rwy ldg	3707
174°	TDZE	1561
	Apt Elev	1561

RNAV (GPS) RWY 17

ARLEDGE FLD (F56)

RNP APCH-GPS.

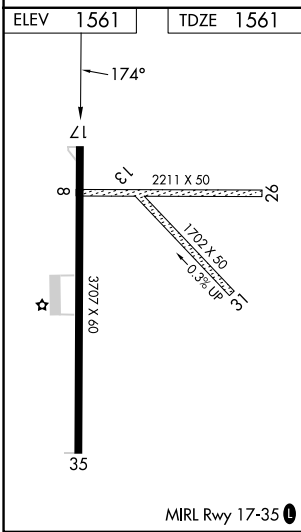
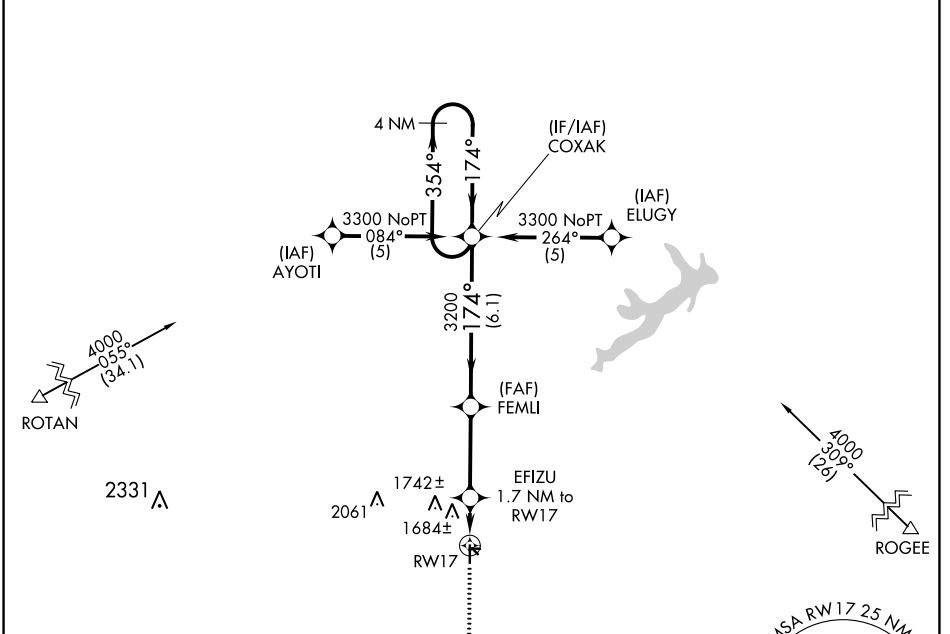
Procedure NA at night. Use Abilene Rgnl altimeter setting; when not received use Breckenridge altimeter setting and increase all MDAs 40 feet.

Procedure NA at night. Use Abilene Rgnl altimeter setting; when not received use Breckenridge altimeter setting and increase all MDAs 40 feet.

Rwy 17 helicopter visibility reduction below 1 SM NA.

MISSED APPROACH: Climb to 3300 direct HINTA and hold.

ABILENE APP CON	UNICOM
127.2 282.3	122.8 (CTAF) 0



ELEV	1561	TDZE	1561
<p>MISSED APCH FIX</p> <p>HINTA</p> <p>MSA RW 17 25 NM</p> <p>3900</p>			
3300	HINTA	FEMLI	COXAK
↑	★		4 NM Holding Pattern
EFIZU	3200	3300	
1.7 NM to RW17	3.04° TCH 40	174°	354°
2120	3200	3300	
1.7 NM	3.3 NM	6.1 NM	
CATEGORY	A	B	C
LNAV MDA	2040-1	479 (500-1)	2040-1 ³ / ₈ 479 (500-1 ³ / ₈)
CIRCLING	2100-1 539 (600-1)	2200-1 639 (700-1)	2220-1 ³ / ₄ 659 (700-1 ³ / ₄)

SC-2, 11 JUL 2024 to 08 AUG 2024

SC-2, 11 JUL 2024 to 08 AUG 2024