

LOC/DME I-UKF <b>111.55</b> Chan 52 (Y)	APP CRS <b>007°</b>	Rwy Idg TDZE <b>6200</b> <b>1276</b> Apt Elev <b>1303</b>
---	------------------------	--

# ILS Y or LOC Y RWY 1

WILKES COUNTY (UKF)

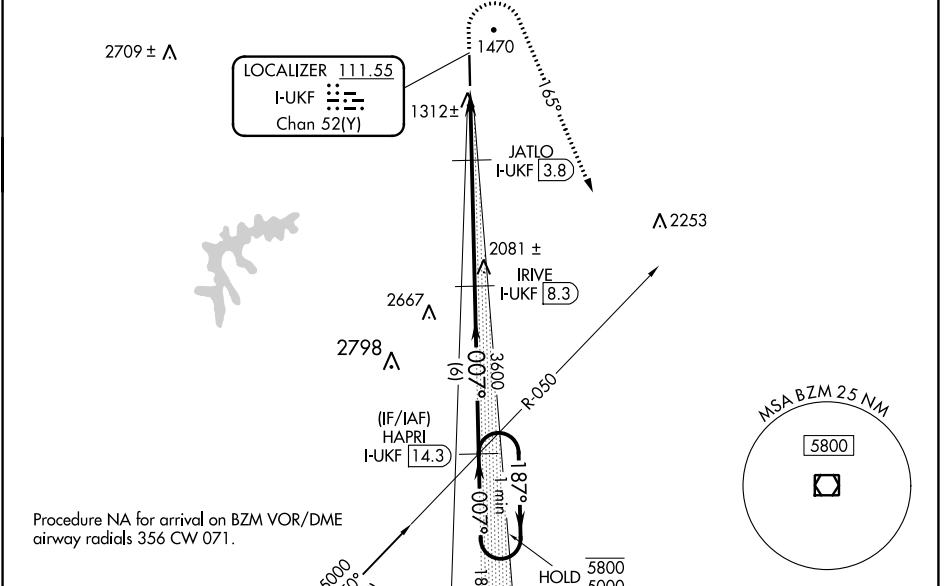
DME required.

VDP NA when using Hickory altimeter setting. When local altimeter setting not received, use Hickory altimeter setting and increase S-ILS DA to 1569 feet and all MDAs 100 feet, and increase S-LOC Cats C/D visibility  $\frac{3}{8}$  SM and Circling Cat C visibility  $\frac{1}{2}$  SM. For inop ALS when using Hickory altimeter setting, increase S-ILS all Cats visibility and S-LOC Cat C/D visibility  $\frac{3}{8}$  SM.

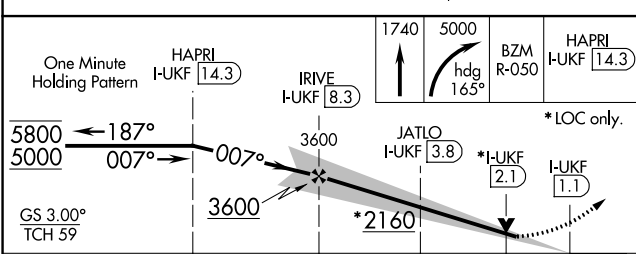
**MALSR**

**MISSED APPROACH:** Climb to 1740 then climbing right turn to 5000 heading 165° and BZM VOR/DME R-050 direct HAPRI/I-UKF 14.3 DME and hold, continue climb-in-hold to 5000.

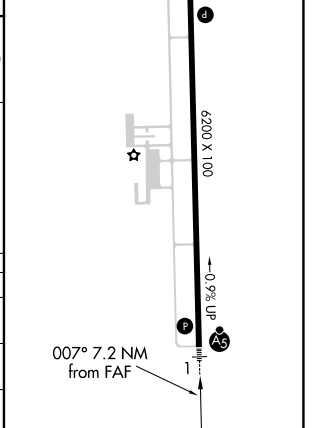
AWOS-3 <b>126.625</b>	ATLANTA CENTER <b>125.15 263.0</b>	UNICOM <b>122.7 (CTAF)</b>
--------------------------	---------------------------------------	-------------------------------



ELEV 1303	TDZE 1276
REIL Rwy 19	MRL Rwy 1-19



CATEGORY	A	B	C	D
S-ILS 1	1476- $\frac{1}{2}$		200 (200- $\frac{1}{2}$ )	
S-LOC 1	1640- $\frac{1}{2}$	364 (400- $\frac{1}{2}$ )	1640- $\frac{5}{8}$	364 (400- $\frac{5}{8}$ )
CIRCLING	1800-1	1880-1	1880-1 $\frac{1}{2}$	2240-3
	497 (500-1)	577 (600-1)	577 (600-1 $\frac{1}{2}$ )	937 (1000-3)



SE-2, 11 JUL 2024 to 08 AUG 2024

SE-2, 11 JUL 2024 to 08 AUG 2024