

| | | |
|--|------------------------|---|
| WAAS CH 48931 W17A | APP CRS 174° | Rwy Idg 5000 TDZE 105 Apt Elev 105 |
|--|------------------------|---|

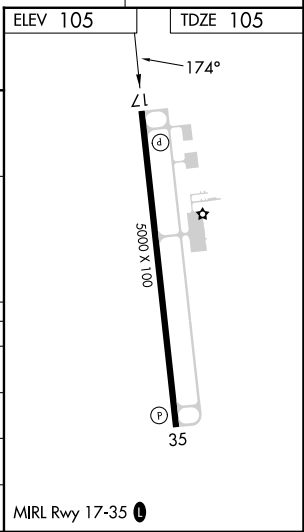
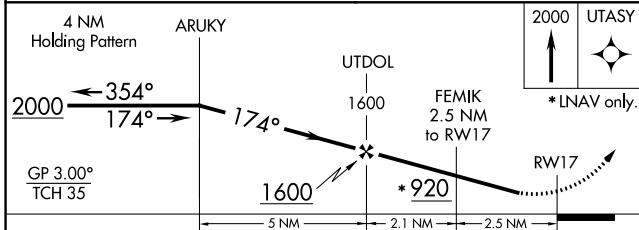
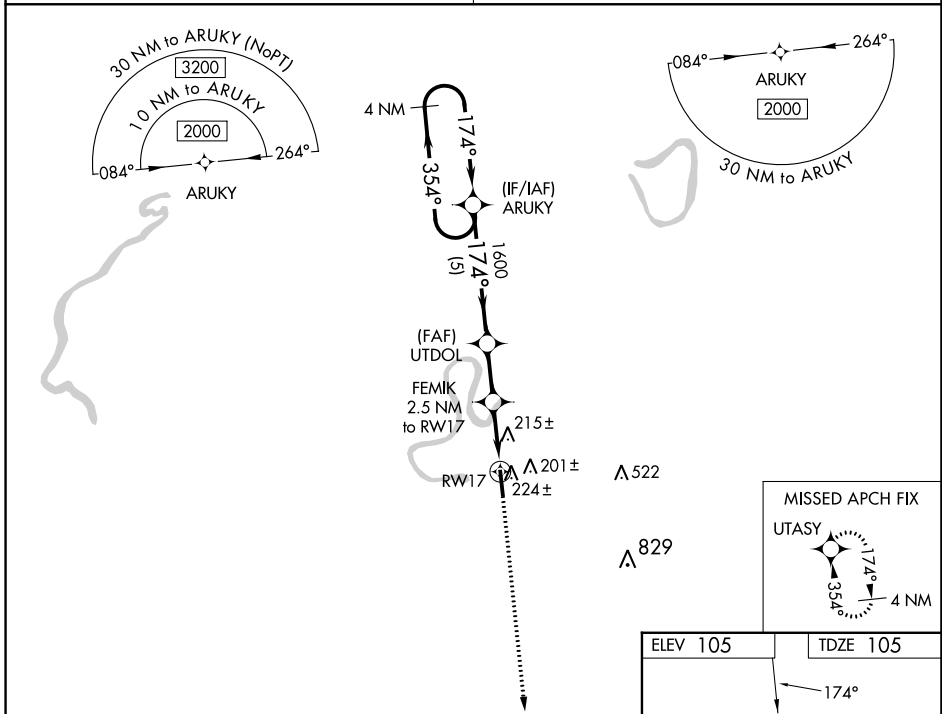
RNAV (GPS) RWY 17

YAZOO COUNTY (87I)

NA Baro-VNAV NA. Use Madison altimeter setting; when not received, use Jackson altimeter setting and increase all DA 8 feet and all MDA 20 feet; increase LNAV/VNAV visibility all Cats 1/8 mile. DME/DME RNP-0.3 NA. Helicopter visibility reduction below 3/4 SM NA.

MISSED APPROACH: Climb to 2000 direct UTASY and hold.

| | |
|--------------------------------------|-------------------------------|
| MEMPHIS CENTER 132.5 259.1 | UNICOM 122.8 (CTAF) |
|--------------------------------------|-------------------------------|



| CATEGORY | A | B | C | D |
|--------------|-------|-------------|--------------|------------------------|
| LPV DA | | 461-1¼ | 356 (400-1¼) | |
| LNAV/VNAV DA | | 622-1¾ | 517 (600-1¾) | |
| LNAV MDA | 580-1 | 475 (500-1) | 580-1¾ | 475 (500-1¾) |
| CIRCLING | 640-1 | 535 (600-1) | 640-1½ | 960-2¾ 855 (900-2¾) |

SC-4, 11 JUL 2024 to 08 AUG 2024

SC-4, 11 JUL 2024 to 08 AUG 2024