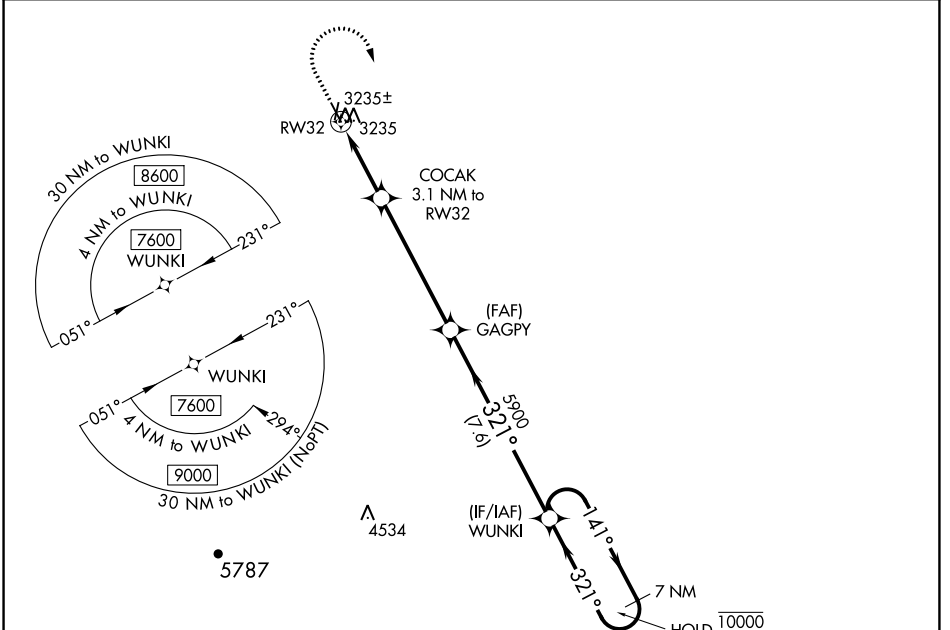


WAAS CH <b>82728</b> <b>W32A</b>	APP CRS <b>321°</b>	Rwy Idg TDZE Apt Elev	<b>4501</b> <b>3180</b> <b>3191</b>
----------------------------------------	------------------------	-----------------------------	-------------------------------------------

# RNAV (GPS) RWY 32

BELLE FOURCHE MUNI (EFC)

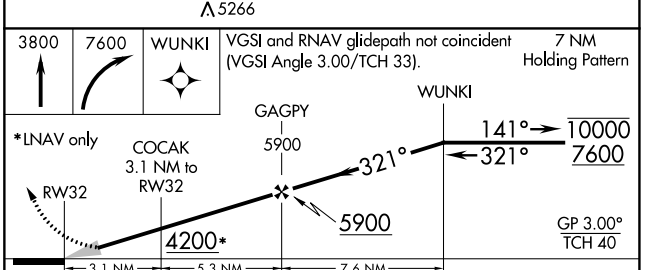
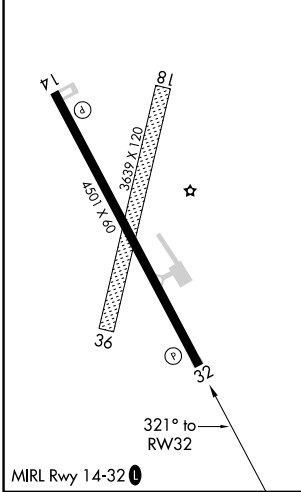
RNP APCH.	Baro-VNAV NA. Use Ellsworth altimeter setting.	MISSED APPROACH: Climb to 3800 then climbing right turn to 7600 direct WUNKI and hold. Continue climb-in-hold to 7600.
DENVER CENTER <b>127.95 338.2</b>		AUNICOM <b>122.8 (CTAF) 0</b>



NC-1, 11 JUL 2024 to 08 AUG 2024

NC-1, 11 JUL 2024 to 08 AUG 2024

ELEV 3191	TDZE 3180
-----------	-----------



CATEGORY	A	B	C	D
LPV DA	3553-1		373 (400-1)	NA
LNAV/VNAV DA	3558-1		378 (400-1)	NA
LNAV MDA	3660-1	480 (500-1)	3660-1 <sup>3</sup> / <sub>8</sub> 480 (500-1 <sup>3</sup> / <sub>8</sub> )	NA
<b>C</b> CIRCLING	3780-1 589 (600-1)	3820-1 629 (700-1)	3820-1 <sup>3</sup> / <sub>4</sub> 629 (700-1 <sup>3</sup> / <sub>4</sub> )	NA