

VORTAC TUL 114.4 Chan 91	APP CRS 060°	Rwy Idg TDZE Apt Elev N/A N/A 733
--	------------------------	---

VOR/DME-B

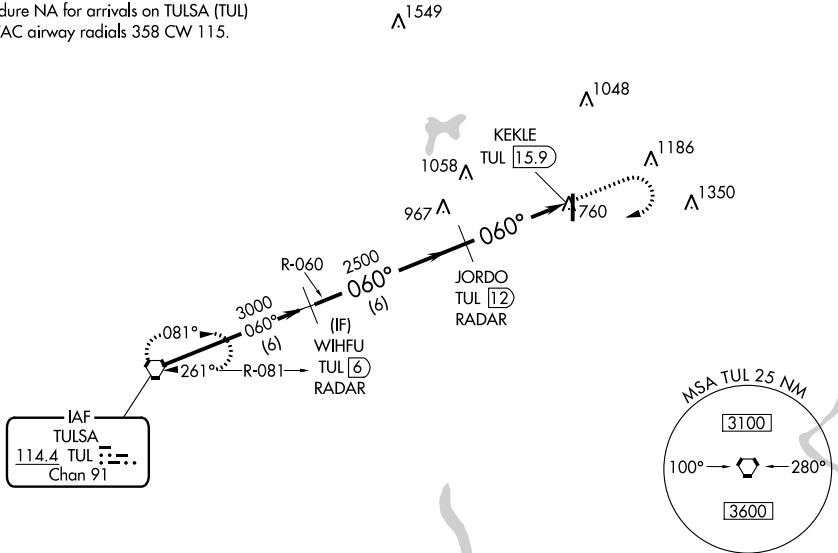
CLAREMORE RGNL (GCM)

▽ If local altimeter setting not received, use Tulsa Intl altimeter setting and increase all MDAs 60 feet.

MISSED APPROACH: Climb to 2500 then climbing right turn to 3000 direct TUL VORTAC and hold.

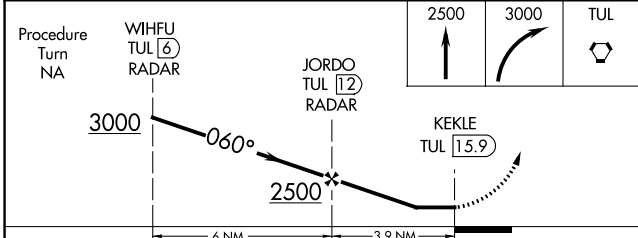
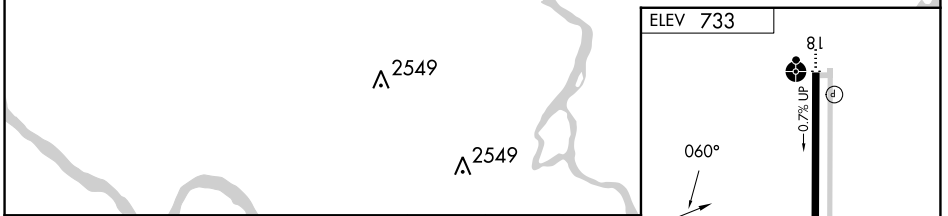
AWOS-3PT 119.925	TULSA APP CON 119.1 360.825	UNICOM 122.7 (CTAF) 0
----------------------------	---------------------------------------	---------------------------------

Procedure NA for arrivals on TULSA (TUL)
VORTAC airway radials 358 CW 115.



SC-1, 11 JUL 2024 to 08 AUG 2024

SC-1, 11 JUL 2024 to 08 AUG 2024



CATEGORY	A	B	C	D
C CIRCLING	1260-1	527 (600-1)	1380-1 ³ / ₄ 647 (700-1 ³ / ₄)	NA

ELEV 733

060°

81

0.7% UP

5200 X 75

36

MIRL Rwy 18-36
REIL Rwy 36 0