

| | | | |
|---------------------------------|------------------------|-----------------------------|---|
| WAAS CH 70631 W31A | APP CRS 313° | Rwy Idg TDZE Apt Elev | 4198 1606 1607 |
|---------------------------------|------------------------|-----------------------------|---|

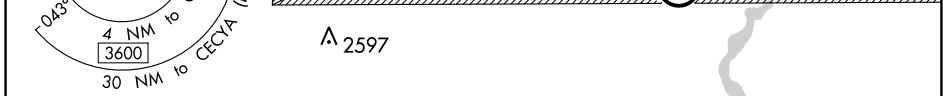
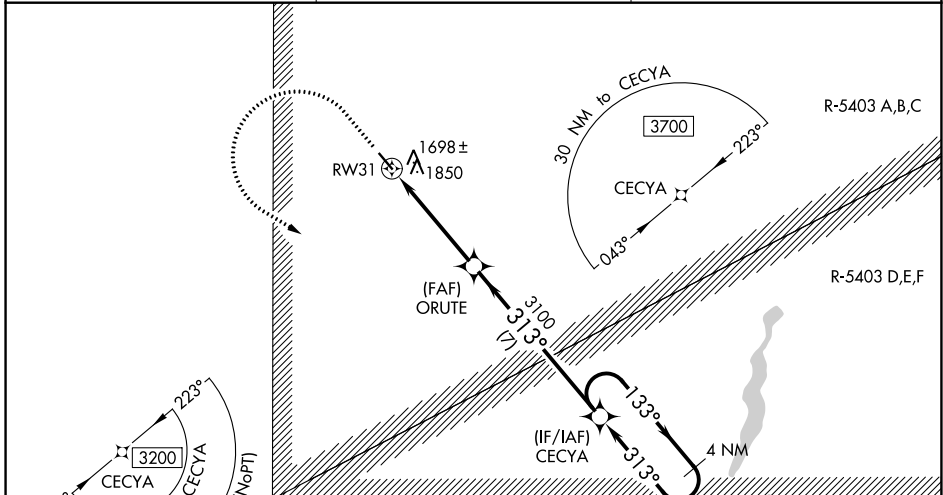
RNAV (GPS) RWY 31

CARRINGTON MUNI (46D)

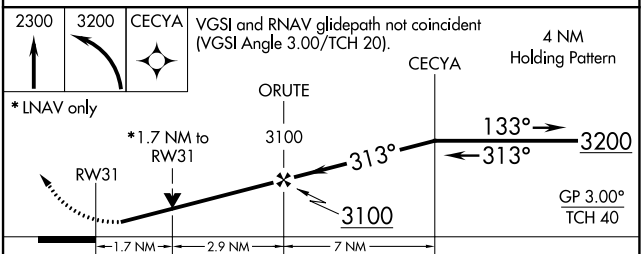
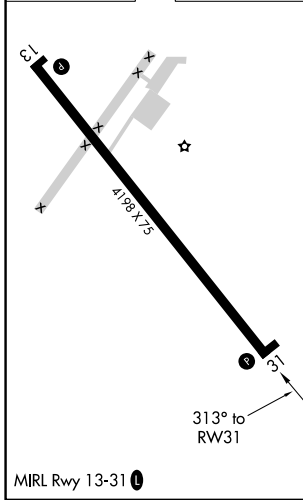
⚠ For uncompensated Baro-VNAV systems, LNAV/VNAV NA below -18°C (0°F) or above 54°C (130°F). DME/DME RNP-0.3 NA. Helicopter visibility reduction below ¾ SM NA. Circling Rwy 13 NA at night. VDP and Baro-VNAV NA with Jamestown altimeter setting. When local altimeter setting not received, use Jamestown altimeter setting and increase all DA and MDA 100 feet, increase LPV all Cats visibility ½ mile; LNAV/VNAV all Cats visibility ¾ mile; LNAV Cat C visibility ¼ mile and Circling Cat C visibility ¾ mile.

MISSED APPROACH: Climb to 2300 then climbing left turn to 3200 direct CECYA and hold.

| | | |
|--------------------------|--|------------------------|
| AWOS-3 118.575 | MINNEAPOLIS CENTER 124.2 270.3 | CTAF 122.9 0 |
|--------------------------|--|------------------------|



| | |
|-----------|-----------|
| ELEV 1607 | TDZE 1606 |
|-----------|-----------|



| CATEGORY | A | B | C | D |
|--------------|---------|--------------|-------------------------|----|
| LPV DA | 1856-1 | 250 (300-1) | | NA |
| LNAV/VNAV DA | 2050-1½ | 444 (500-1½) | | NA |
| LNAV MDA | 2160-1 | 554 (600-1) | 2160-1½ 554 (600-1½) | NA |
| CIRCLING | 2200-1 | 593 (600-1) | 2200-1½ 593 (600-1½) | NA |

NC-1, 11 JUL 2024 to 08 AUG 2024

NC-1, 11 JUL 2024 to 08 AUG 2024