

WAAS CH <b>78433</b> <b>W17A</b>	APP CRS <b>179°</b>	Rwy Idg TDZE Apt Elev	<b>5010</b> <b>1010</b> <b>1010</b>
--	------------------------	-----------------------------	---

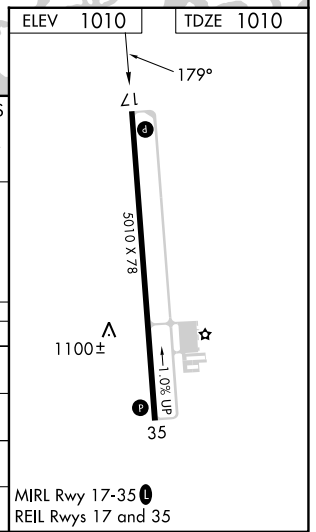
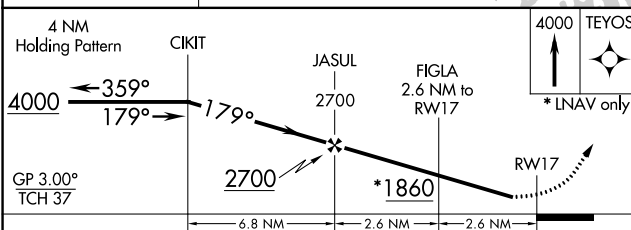
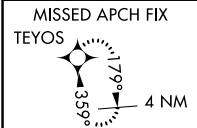
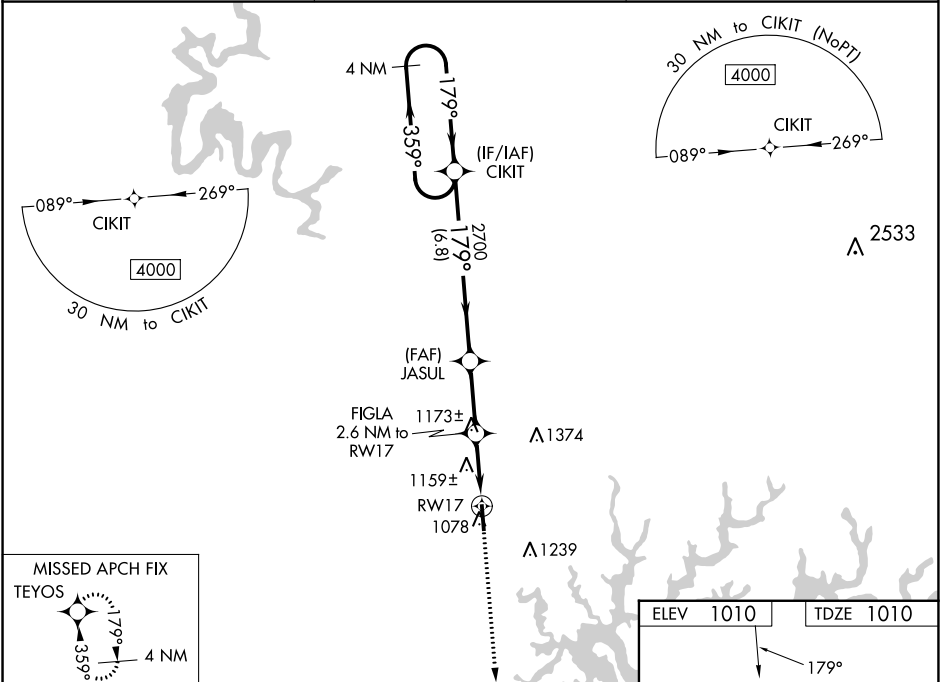
# RNAV (GPS) RWY 17

RUSSELL COUNTY (K24)

**▼** Baro-VNAV NA when using Wayne County altimeter setting. For uncompensated Baro-VNAV systems, LNAV/VNAV NA below -17°C (2°F) or above 54°C (130°F). When local altimeter setting not received, use Wayne County altimeter setting increase all DA 42 feet and increase all MDA 60 feet; increase LPV all Cats 1/8 mile; LNAV/VNAV all Cats 1/4 mile and LNAV and Circling Cats C/D visibility 1/4 mile. DME/DME RNP-0.3 NA. Helicopter visibility reduction below 3/4 SM NA.

**▲ NA** MISSED APPROACH: Climb to 4000 direct TEYOS and hold.

AWOS-3 <b>119.6</b>	INDIANAPOLIS CENTER <b>124.625 371.925</b>	UNICOM <b>123.0 (CTAF) 0</b>
------------------------	---	---------------------------------



CATEGORY	A	B	C	D
LPV DA		1346-1 1/8	336 (400-1 1/8)	
LNAV/VNAV DA		1424-1 3/8	414 (500-1 3/8)	
LNAV MDA	1420-1	410 (500-1)	1420-1 1/8	410 (500-1 1/8)
<b>C</b> CIRCLING	1540-1 530 (600-1)	1620-1 610 (700-1)	1700-2 690 (700-2)	1700-2 1/4 690 (700-2 1/4)

SE-1, 11 JUL 2024 to 08 AUG 2024

SE-1, 11 JUL 2024 to 08 AUG 2024