

APP CRS	Rwy Idg	N/A
104°	TDZE	N/A
	Apt Elev	412

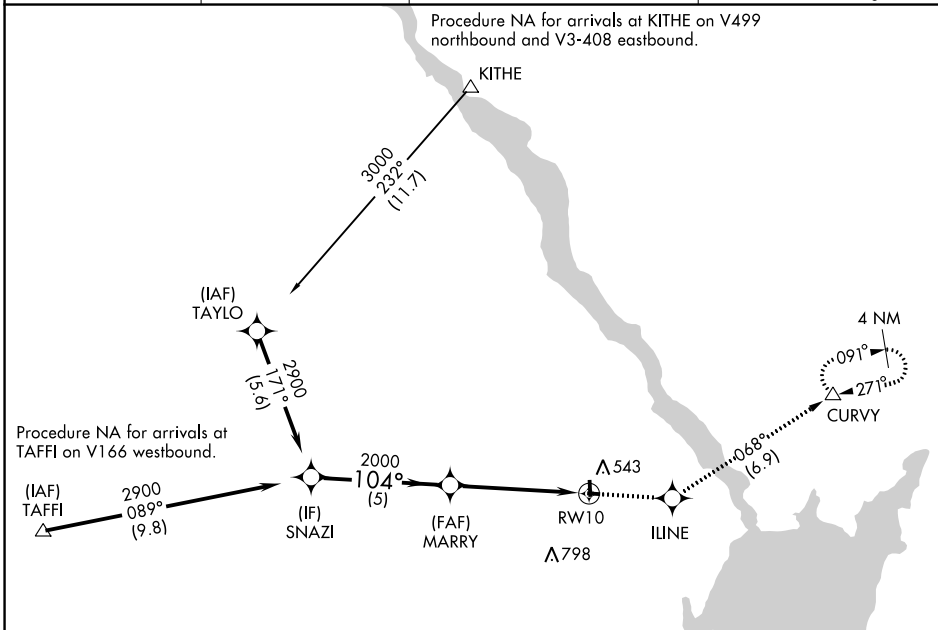
# RNAV (GPS)-B

HARFORD COUNTY (ØW3)

RNP APCH.  
 ▼ Rwy 1, 19, 10 and 28 helicopter visibility reduction below 1 SM NA. Use Phillips AAF altimeter setting; when not received use Baltimore/Washington Intl Thurgood Marshall altimeter setting and increase MDA 60 feet. Procedure NA at night.  
 ▲ NA

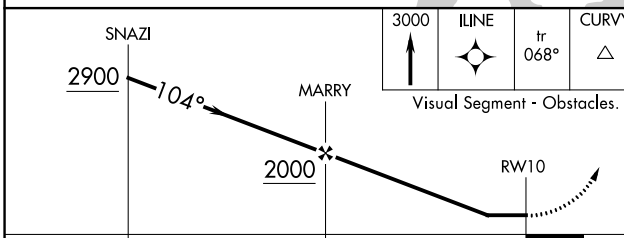
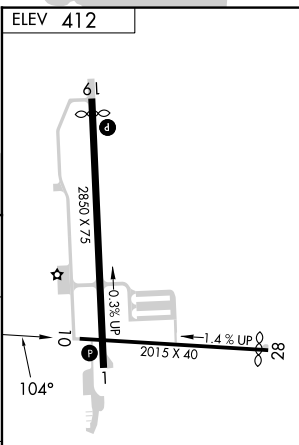
MISSED APPROACH: Climb to 3000 direct ILINE and on track 068° to CURVY and hold, continue climb-in-hold to 3000.

AWOS-3PT <b>132.725</b>	KAPG ATIS * <b>124.425</b>	POTOMAC APP CON <b>125.525 291.625</b>	UNICOM <b>122.8 (CTAF) 0</b>
----------------------------	-------------------------------	---	---------------------------------



NE-3, 11 JUL 2024 to 08 AUG 2024

NE-3, 11 JUL 2024 to 08 AUG 2024



CATEGORY	A	B	C	D
CIRCLING	960-1 548 (600-1)		NA	

MIRL Rwy 1-19 0  
 REIL Rws 1 and 19 0  
 REIL Rws 10 and 28