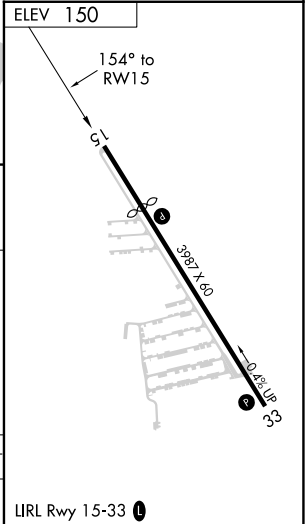
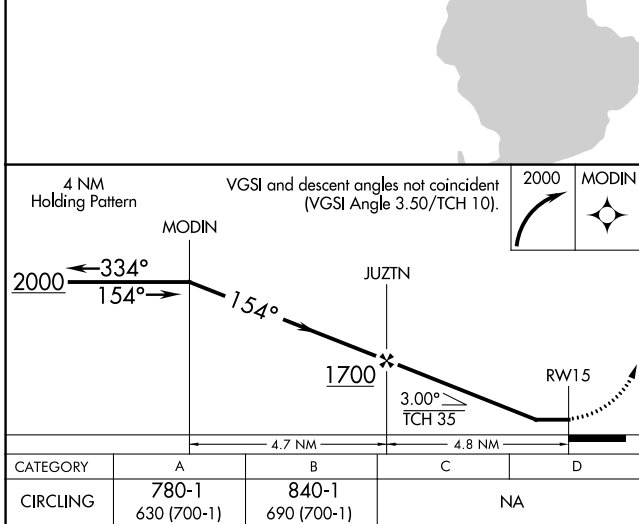
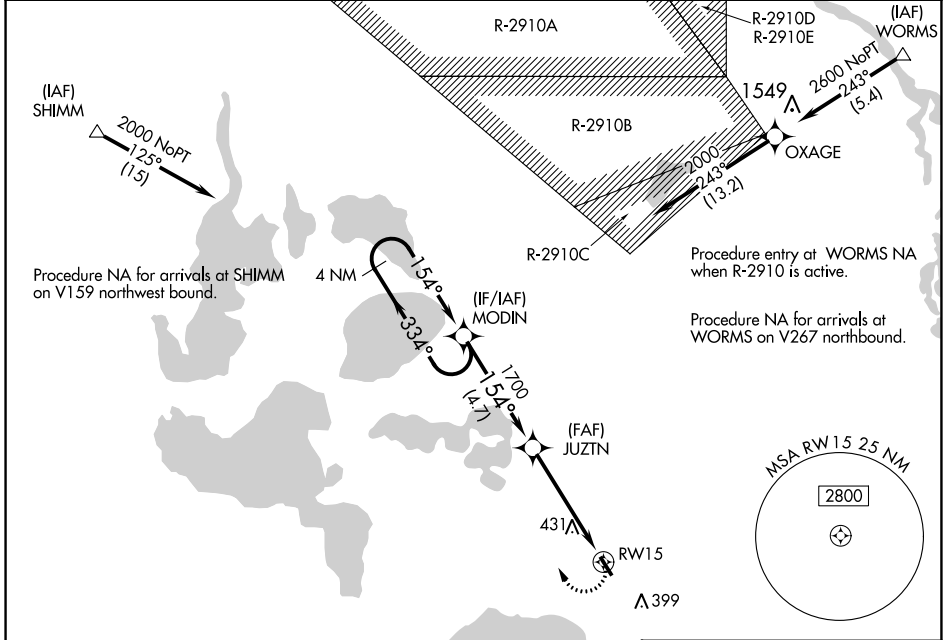


APP CRS 154°	Rwy Idg TDZE Apt Elev	N/A N/A 150
------------------------	-----------------------------	--

RNAV (GPS)-A
ORLANDO APOPKA (X04)

<p>▽ DME/DME RNP-0.3 NA. Procedure NA at night. Visibility reduction by helicopters NA. Use Leesburg Intl altimeter setting; when not received, use Executive altimeter setting.</p> <p>△ NA</p>	<p>MISSED APPROACH: Climbing right turn to 2000 direct MODIN and hold.</p>
--	---

LEE ASOS 134.325	ORLANDO APP CON 135.3 351.9	UNICOM 123.05 (CTAF) ①
----------------------------	---------------------------------------	---



CATEGORY	A	B	C	D
CIRCLING	780-1 630 (700-1)	840-1 690 (700-1)	NA	

IIRL Rwy 15-33 **①**

SE-3, 11 JUL 2024 to 08 AUG 2024

SE-3, 11 JUL 2024 to 08 AUG 2024