

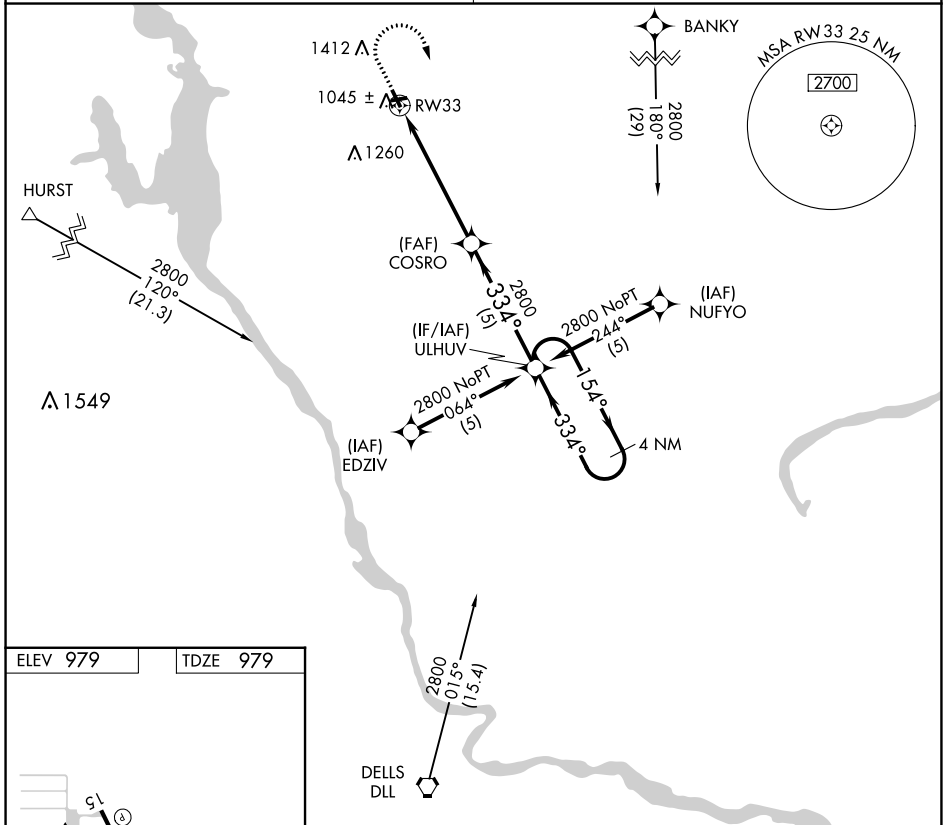
|             |          |             |
|-------------|----------|-------------|
| APP CRS     | Rwy Idg  | <b>3398</b> |
| <b>334°</b> | TDZE     | <b>979</b>  |
|             | Apt Elev | <b>979</b>  |

# RNAV (GPS) RWY 33

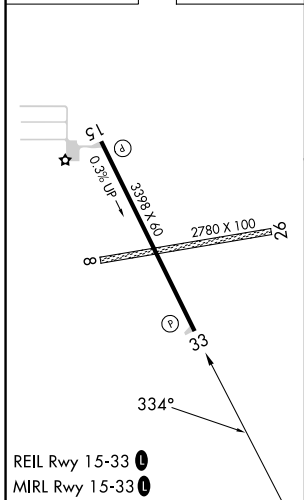
ADAMS COUNTY LEGION FLD (63C)

|           |  |  |
|-----------|--|--|
| RNP APCH. | Procedure NA at night. Rwy 33 helicopter visibility reduction below 1 SM NA. | MISSED APPROACH: Climb to 2000 then climbing right turn to 2800 direct ULHUV and hold. |
| <b>NA</b> | Circling NA to Rwy 8 and 26. Use Baraboo Wisconsin Dells altimeter setting.  |  |

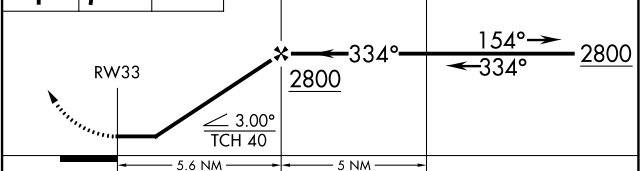
|  |                      |
|--|----------------------|
| VOLK APP CON★<br><b>135.25 244.875</b> | CTAF<br><b>122.9</b> |
|--|----------------------|



|          |          |
|----------|----------|
| ELEV 979 | TDZE 979 |
|----------|----------|



|      |      |       |   |                      |
|------|------|-------|---|----------------------|
| 2000 | 2800 | ULHUV | VGSI and descent angles not coincident (VGSI Angle 3.00°/TCH 20). | 4 NM Holding Pattern |
| ↑    | ↷    | ✧     | COSRO   | ULHUV                |



| CATEGORY | A                     | B                       | C | D  |
|----------|-----------------------|-------------------------|---|----|
| LNAV MDA | 1500-1                | 521 (600-1)             |   | NA |
| CIRCLING | 1640-1<br>661 (700-1) | 1780-1¼<br>801 (900-1¼) |   | NA |

EC-3, 11 JUL 2024 to 08 AUG 2024

EC-3, 11 JUL 2024 to 08 AUG 2024