

APP CRS **125°**  
 Rwy ldg **4196**  
 TDZE **1746**  
 Apt Elev **1747**

# RNAV (GPS) RWY 14

LAKE PLACID (LKP)

RNP APCH - GPS.

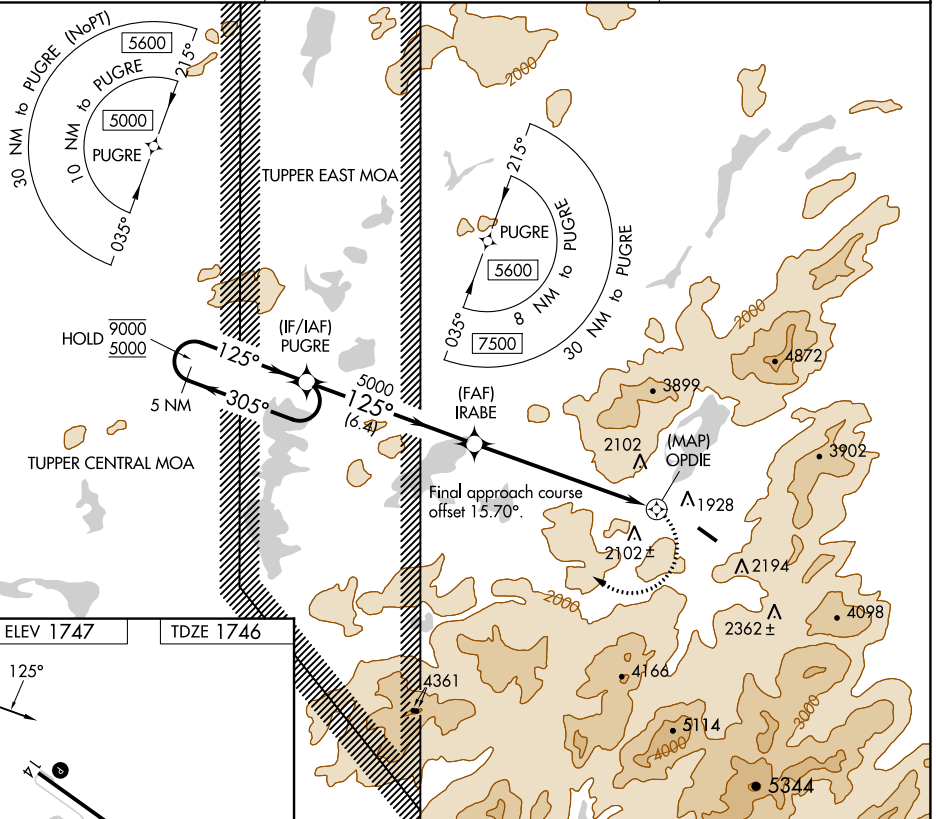
- Rwy 14 helicopter visibility reduction below 1 SM NA.
- Use Saranac Lake altimeter setting.
- 32°C Procedure NA at night.

MISSED APPROACH: Climbing right turn to 5000 direct PUGRE and hold.

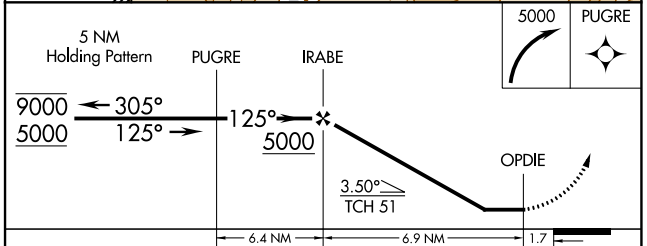
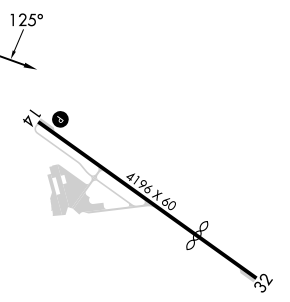
SLK ASOS  
**124.175**

BOSTON CENTER  
**120.35 342.25**

UNICOM  
**122.8 (CTAF) 0**



ELEV 1747 TDZE 1746



| CATEGORY  | A      | B             | C | D  |
|-----------|--------|---------------|---|----|
| LNNAV MDA | 3080-2 | 1334 (1400-2) |   | NA |
| CIRCLING  | 3080-2 | 1333 (1400-2) |   | NA |

MIRL Rwy 14-32 0

NE-2, 11 JUL 2024 to 08 AUG 2024

NE-2, 11 JUL 2024 to 08 AUG 2024