

APP CRS 319°	Rwy Idg 3400
	TDZE 1226
	Apt Elev 1228

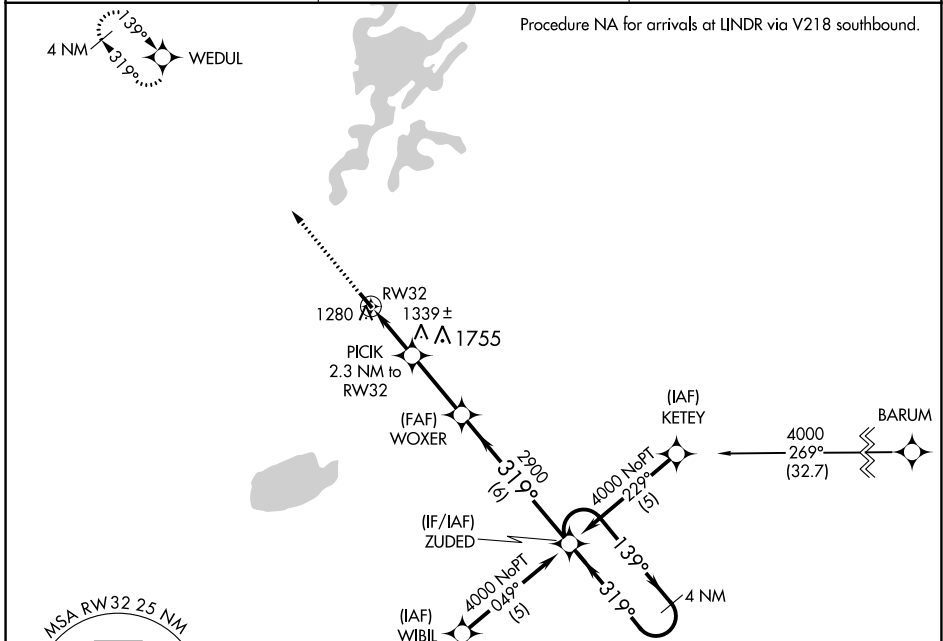
RNAV (GPS) RWY 32

ISEDOR IVERSON (H.Z.X)

▼ DME/DME RNP-0.3 NA.
When local altimeter setting not received, use Aitkin altimeter setting and increase all MDAs 40 feet.
VDP NA when using Aitkin altimeter setting.

MISSED APPROACH: Climb to 4000 direct WEDUL and hold.

AWOS-3 119.575	MINNEAPOLIS CENTER 127.9 281.45	CTAF 122.9 0
--------------------------	---	------------------------



NC-1, 11 JUL 2024 to 08 AUG 2024

NC-1, 11 JUL 2024 to 08 AUG 2024

ELEV 1228	TDZE 1226			
4000 WEDUL	VGSI and descent angles not coincident (VGSI Angle 3.00/TCH 19).			
PICIK 2.3 NM to RW32	WOXER			
ZUDED	4 NM Holding Pattern			
1.1 NM to RW32	1.3 NM			
2.8 NM	6 NM			
2000	2900			
3.04° TCH 40	139°			
319°	4000			
319°				
CATEGORY	A	B	C	D
LNVA MDA	1600-1	374 (400-1)		NA
CIRCLING	1660-1 432 (500-1)	1700-1 472 (500-1)		NA

