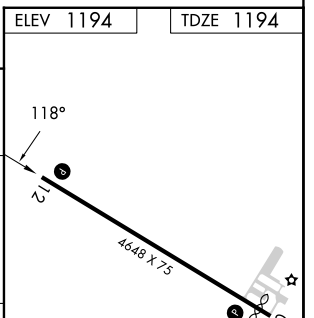
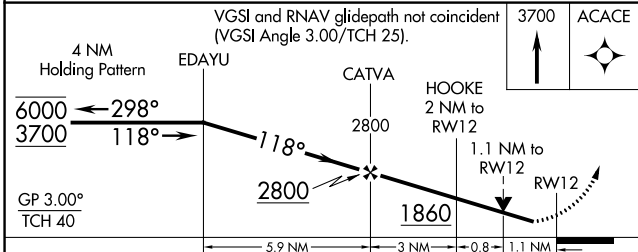
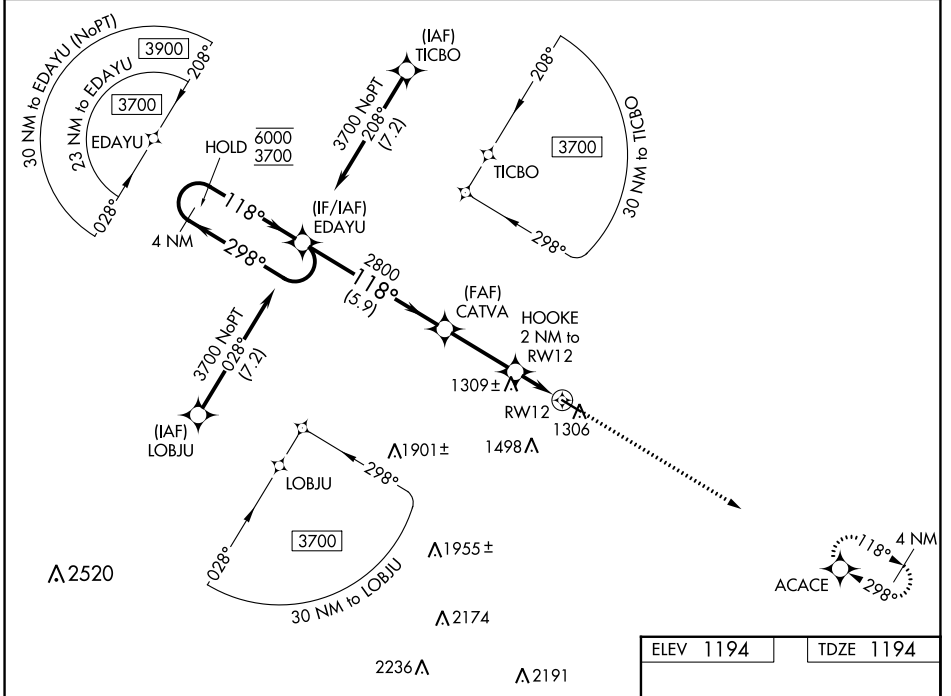


WAAS CH 56418	APP CRS 118°	Rwy ldg TDZE Apt Elev	4648 1194 1194
-------------------------	------------------------	-----------------------------	---

RNAV (GPS) RWY 12

MYERS FLD (CNB)

RNP APCH - GPS.		MISSED APPROACH: Climb to 3700 direct ACACE and hold.
<p>▼ Rwy 12 helicopter visibility reduction below 3/4 SM NA. For uncompensated Baro-VNAV systems, LNAV/VNAV NA below -17°C or above 54°C.</p>		
AWOS-3 118.575	MINNEAPOLIS CENTER 128.5 306.2	CTAF 122.9 0



CATEGORY	A	B	C	D
LPV DA	1444-1 250 (300-1)			
LNAV/VNAV DA	1598-1 1/8 404 (500-1 1/8)			
LNAV MDA	1580-1 386 (400-1)	1580-1 1/8 386 (400-1 1/8)		
C CIRCLING	1700-1 506 (600-1)	1800-1 3/4 606 (700-1 3/4)	1960-2 1/2 766 (800-2 1/2)	

MIRL Rwy 12-30 **0**
REIL Rwy 12 and 30 **0**

NC-1, 11 JUL 2024 to 08 AUG 2024

NC-1, 11 JUL 2024 to 08 AUG 2024