

# RNAV (GPS) RWY 24

GEORGE DOWNER (AIV)

APP CRS <b>244°</b>	Rwy Idg <b>5001</b>
	TDZE <b>150</b>
	Apt Elev <b>150</b>

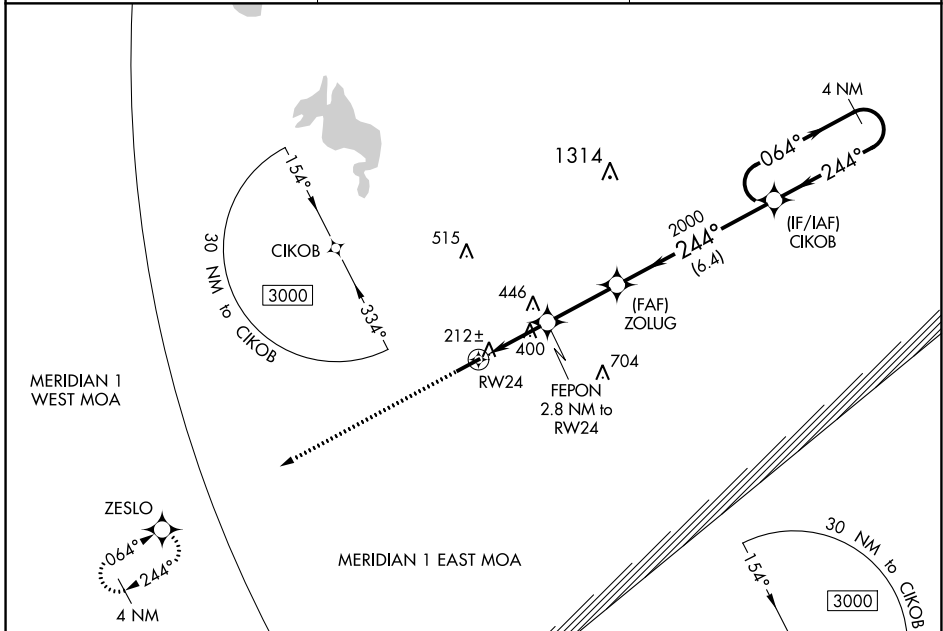
**NA** DME/DME RNP-0.3 NA. Use Tuscaloosa altimeter setting; when not received, use Columbus/W Point/Starkville altimeter setting and increase all MDAs 20 feet, and Circling Cat C visibility ¼ SM. Procedure NA at night. Rwy 24 helicopter visibility reduction below 1 SM NA.

**MISSED APPROACH:**  
Climb to 3000 direct ZESLO and hold.

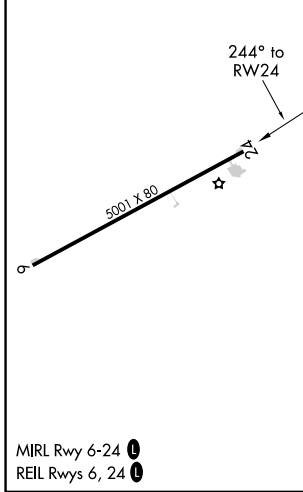
TCL ASOS  
**132.825**

COLUMBUS APP CON  
**135.6 323.275**

UNICOM  
**122.8 (CTAF) 0**



ELEV 150	TDZE 150
----------	----------



Visual Segment - Obstacles.	3000	ZESLO	CIKOB 4 NM Holding Pattern	
CATEGORY	A	B	C	D
LNAV MDA	740-1	590 (600-1)	740-1¾	590 (600-1¾)
<b>C</b> CIRCLING	740-1	590 (600-1)	820-1¾ 670 (700-1¾)	900-2½ 750 (800-2½)

SE-4, 11 JUL 2024 to 08 AUG 2024

SE-4, 11 JUL 2024 to 08 AUG 2024