

WAAS CH <b>97436</b> <b>W17A</b>	APP CRS <b>173°</b>	Rwy Idg TDZE Apt Elev	<b>4497</b> <b>1387</b> <b>1387</b>
--	------------------------	-----------------------------	---

# RNAV (GPS) RWY 17

COMANCHE COUNTY-CITY (MKN)

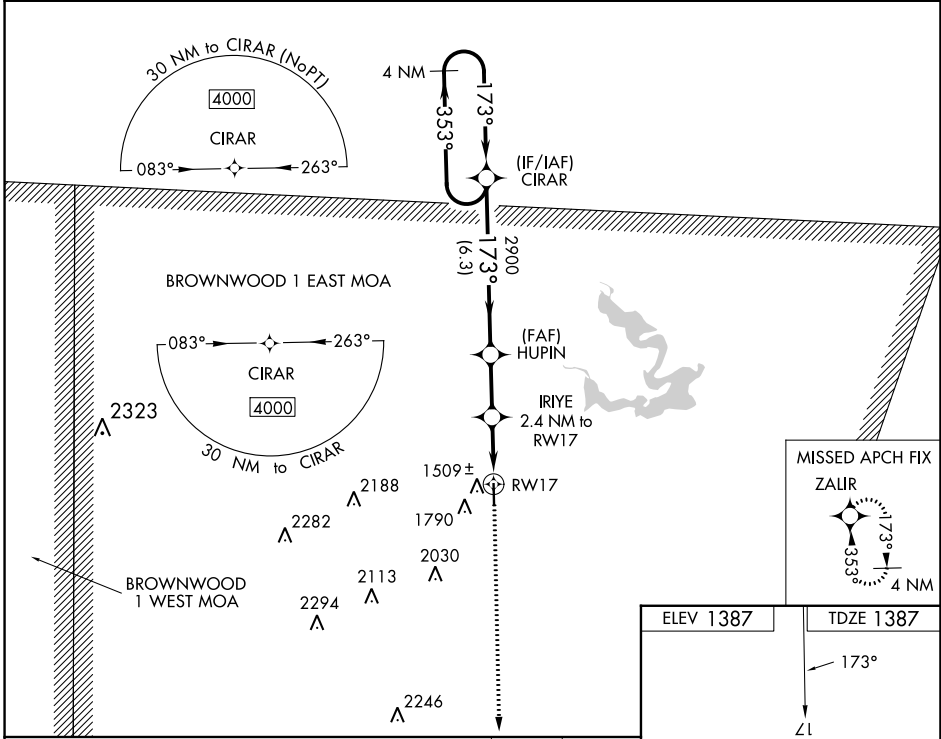
**▼** Night landing: Rwy 35 NA. DME/DME RNP-0.3 NA. When local altimeter setting is not received, use Brownwood altimeter setting; increase all DA 46 feet and all MDA 60 feet, increase LNAV/VNAV visibility all Cats 1/8 mile. Baro-VNAV and VDP NA when using Brownwood altimeter setting. For uncompensated Baro-VNAV systems, LNAV/VNAV NA below -17°C (2°F) or above 54°C (130°F).

**MISSED APPROACH:**  
Climb to 4000 direct ZAIR and hold.

AWOS-3  
**118.575**

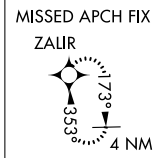
FORT WORTH CENTER  
**127.15 314.0**

UNICOM  
**123.075 (CTAF) 0**

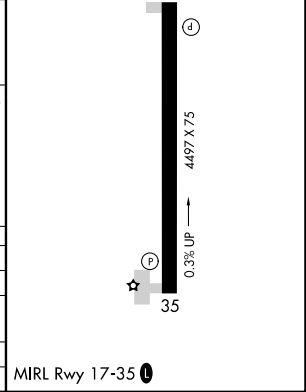
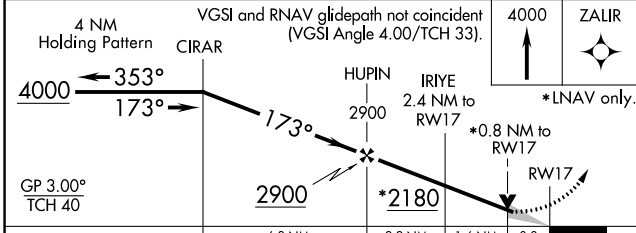


SC-3, 11 JUL 2024 to 08 AUG 2024

SC-3, 11 JUL 2024 to 08 AUG 2024



ELEV 1387	TDZE 1387
-----------	-----------



CATEGORY	A	B	C	D
LPV DA	1637-1	250 (300-1)		NA
LNAV/VNAV DA	1686-1	299 (300-1)		NA
LNAV MDA	1760-1	373 (400-1)		NA
<b>C</b> CIRCLING	2100-1	713 (800-1)		NA

MIRL Rwy 17-35 0