

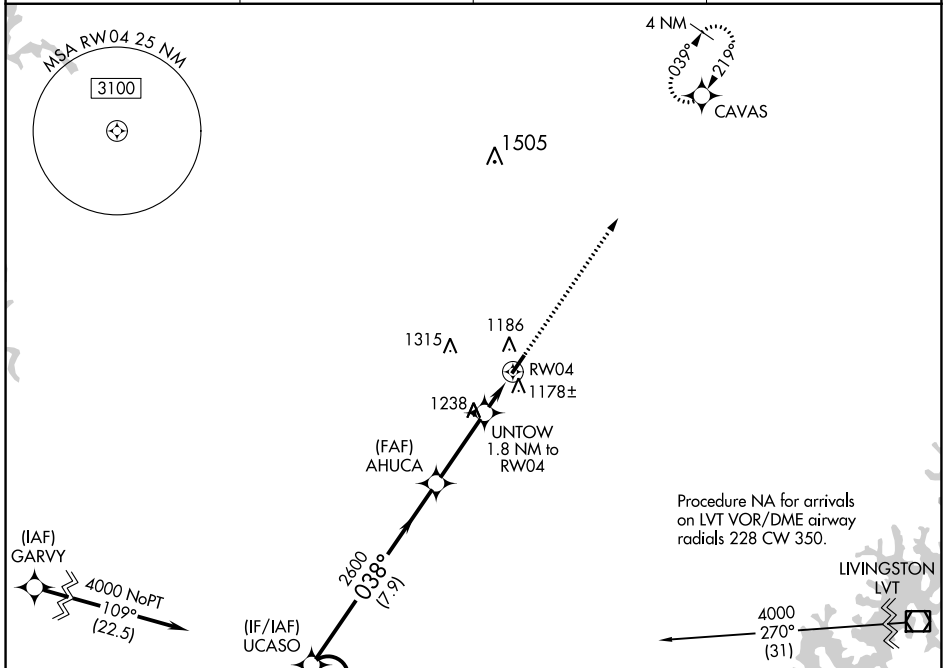
APP CRS 038°	Rwy Idg 4000
	TDZE 1034
	Apt Elev 1036

RNAV (GPS) RWY 4

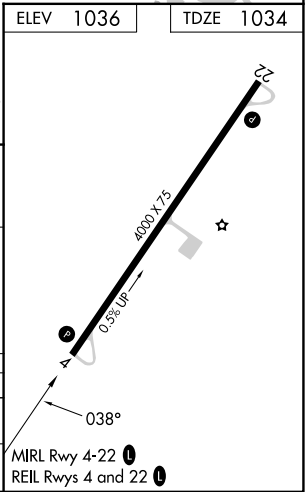
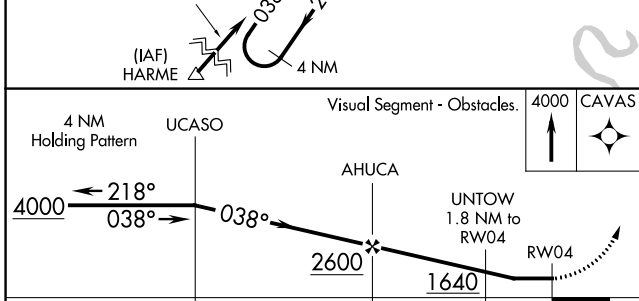
TOMPKINSVILLE/MONROE COUNTY (T'ZV)

<p>▽ DME/DME RNP-0.3 NA. Helicopter visibility reduction below 1 SM NA. △ NA Night landing: Rwy 4 NA. Use Glasgow altimeter setting.</p>	<p>MISSED APPROACH: Climb to 4000 direct CAVAS and hold.</p>
--	--

AWOS-AV 124.175	GLW AWOS-3 118.525	MEMPHIS CENTER 132.9 290.3	UNICOM 123.05 (CTAF) 0
---------------------------	------------------------------	--------------------------------------	----------------------------------



ELEV 1036	TDZE 1034
-----------	-----------



CATEGORY	A	B	C	D
LNVA MDA	1540-1	506 (600-1)	1540-1 3/8 506 (600-1 3/8)	NA
C CIRCLING	1640-1 604 (700-1)	1800-1 764 (800-1)	1840-2 1/4 804 (900-2 1/4)	NA

SE-1, 11 JUL 2024 to 08 AUG 2024

SE-1, 11 JUL 2024 to 08 AUG 2024