

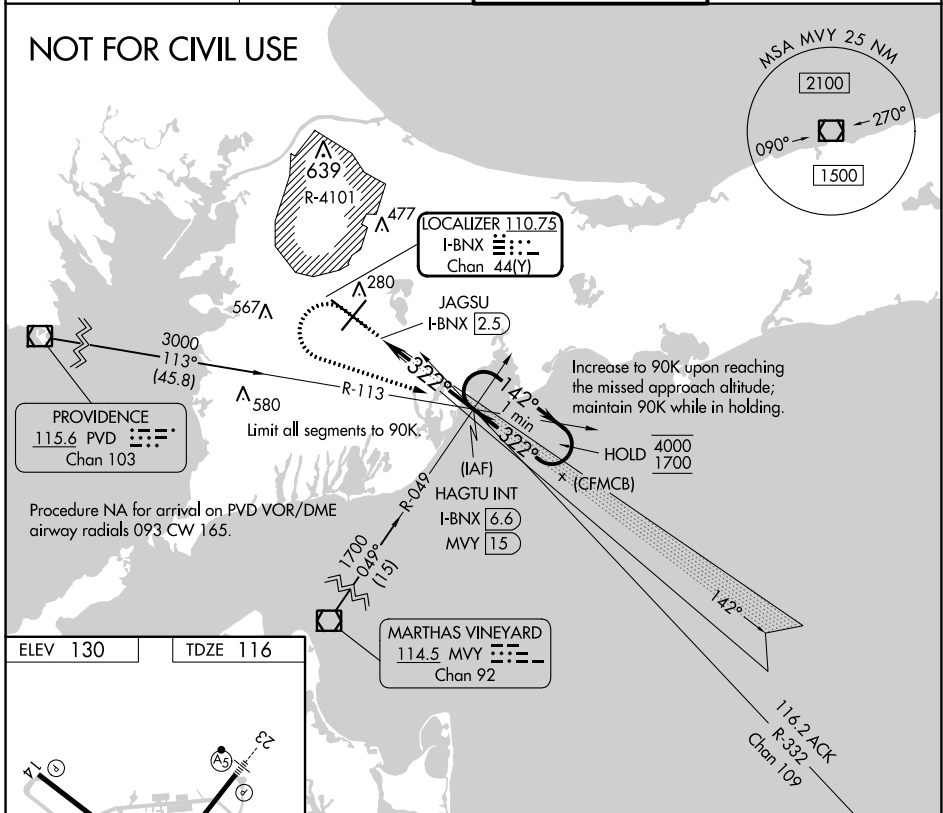
LOC/DME I-BNX 110.75 Chan 44(Y)	APP CRS 322°	Rwy Idg TDZE 116 Apt Elev 130
---	------------------------	---

COPTER ILS Y or LOC Y RWY 32

CAPE COD COAST GUARD AIR STATION (F'MH)

<p>NA U.S. Coast Guard use only. For inop ALS, increase visibility to RVR 2400.</p>	<p>MALS R </p>	<p>MISSED APPROACH: Climb to 1400 then climbing left turn to 2000 on heading 123° and I-BNX localizer SE course to HAGTU INT/I-BNX 6.6 DME and hold.</p>
	<p>ATIS 120.475 236.825</p>	<p>BOSTON APP CON ★ 118.2 284.6</p>
		<p>GND CON 124.15 275.8</p>

NOT FOR CIVIL USE

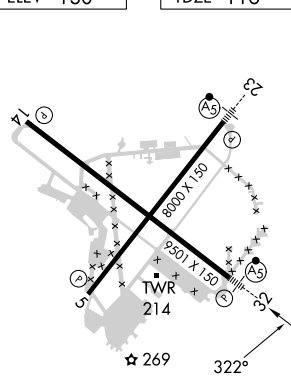


PROVIDENCE
115.6 PVD
Chan 103

Procedure NA for arrival on PVD VOR/DME airway radials 093 CW 165.

Increase to 90K upon reaching the missed approach altitude; maintain 90K while in holding.

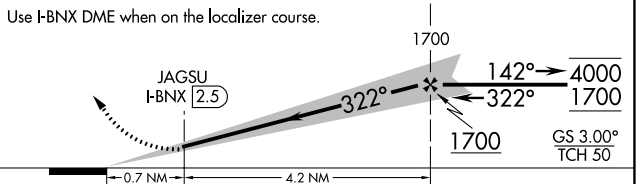
ELEV 130 TDZE 116



REIL Rws 5 and 14
HIRL Rws 5-23 and 14-32

FAF to MAP 4.2 NM					
Knots	45	60	75	90	105
Min:Sec	5:36	4:12	3:22	2:48	2:24

1400	2000	I-BNX SE crs	HAGTU INT	HAGTU INT I-BNX 6.6 MVY 15	One Minute Holding Pattern
↑	hdg 123°				



CATEGORY	COPTER	
H-ILS 32	216/12	100 (100-¼)
H-LOC 32	520/12	404 (400-¼)

NE-1, 11 JUL 2024 to 08 AUG 2024

NE-1, 11 JUL 2024 to 08 AUG 2024