

WAAS CH 73034 W15A	APP CRS 147°	Rwy ldg 3220 TDZE 1348 Apt Elev 1348
--	------------------------	--

RNAV (GPS) RWY 15

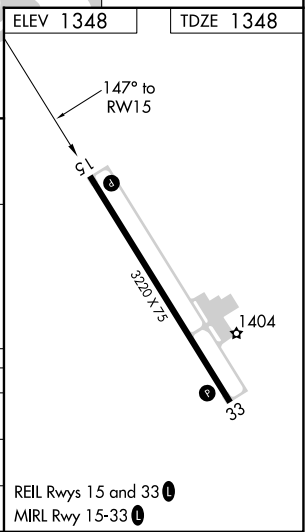
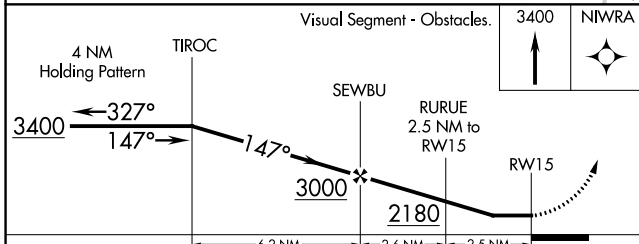
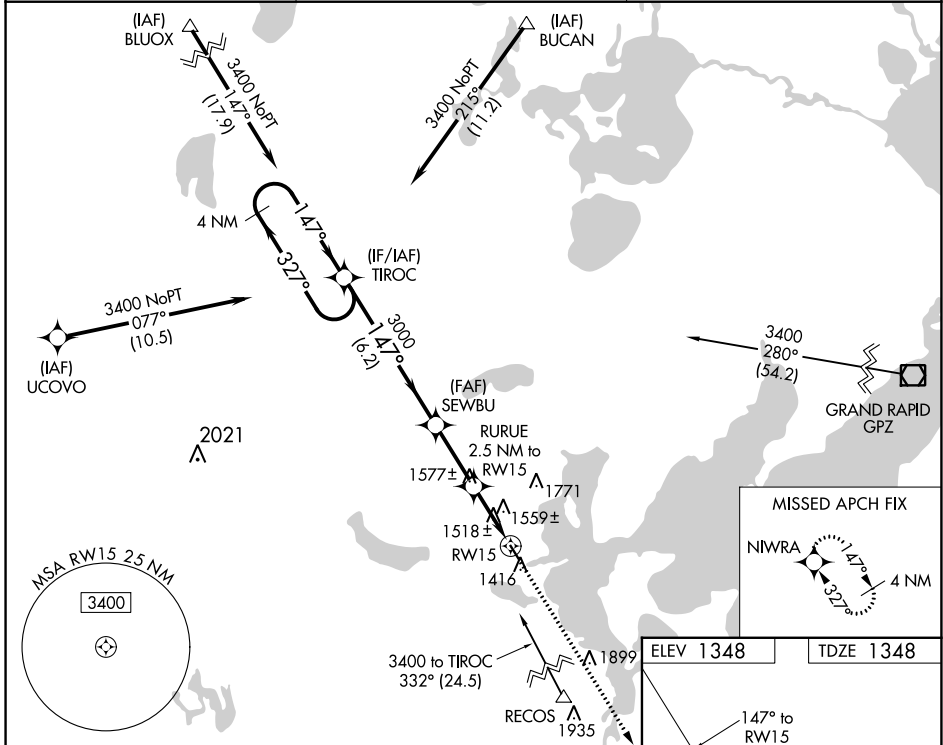
WALKER MUNI (Y49)

RNP APCH.

When local altimeter not received, use Longville altimeter setting and increase all MDA 60 feet; increase LP and LNAV Cat C visibility $\frac{1}{8}$ SM and Circling Cat C visibility $\frac{1}{4}$ SM. Procedure NA at night. Rwy 15 helicopter visibility reduction below 1 SM NA.

MISSED APPROACH: Climb to 3400 direct NIWRA and hold.

AWOS-3PT 119.0	MINNEAPOLIS CENTER 134.75 251.1	CTAF 122.90
--------------------------	---	-----------------------



CATEGORY	A	B	C	D
LP MDA	1780-1	432 (500-1)	1780-1 $\frac{1}{4}$ 432 (500-1 $\frac{1}{4}$)	NA
LNAV MDA	1820-1	472 (500-1)	1820-1 $\frac{3}{8}$ 472 (500-1 $\frac{3}{8}$)	NA
C CIRCLING	1860-1	512 (600-1)	2140-2 $\frac{1}{4}$ 792 (800-2 $\frac{1}{4}$)	NA

NC-1, 11 JUL 2024 to 08 AUG 2024

NC-1, 11 JUL 2024 to 08 AUG 2024