

WAAS CH <b>93844</b> <b>W27A</b>	APP CRS <b>267°</b>	Rwy Idg <b>3199</b> TDZE <b>752</b> Apt Elev <b>752</b>
--	------------------------	---

# RNAV (GPS) RWY 27

BUFFALO-LANCASTER RGNL (BQR)

RNP APCH - GPS.

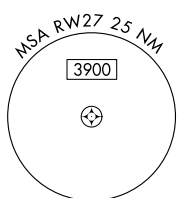
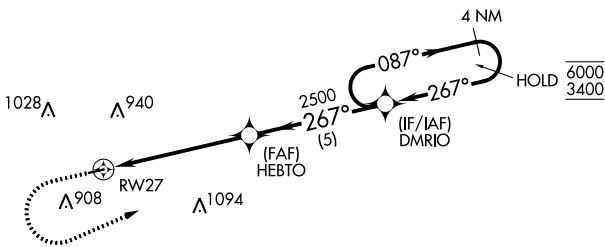
**⚠ NA** Rwy 27 helicopter visibility reduction below 1 SM NA. Baro-VNAV NA. Use Buffalo Niagara Intl altimeter setting. Straight-in Rwy 27 at night, Circling Rwy 27 at night, operational VGSI required, remain on or above VGSI glidepath until threshold.

MISSED APPROACH: Climb to 1300 then climbing left turn to 3400 direct DMRIO and hold, continue climb-in-hold to 3400.

BUF ASOS  
**135.35**

BUFFALO APP CON  
**126.15 263.125**

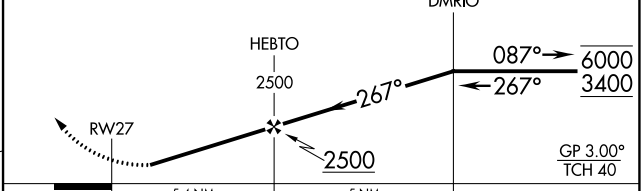
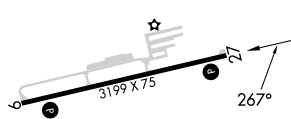
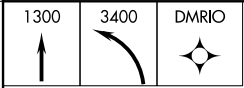
UNICOM  
**123.05 (CTAF) 0**



NE-2, 11 JUL 2024 to 08 AUG 2024

NE-2, 11 JUL 2024 to 08 AUG 2024

ELEV 752	TDZE 752
----------	----------



CATEGORY	A	B	C	D
LPV DA	1070-1	318 (400-1)		NA
LNAV/VNAV DA	1164-1 $\frac{1}{8}$	412 (500-1 $\frac{1}{8}$ )		NA
LNAV MDA	1320-1	568 (600-1)		NA
CIRCLING	1320-1	568 (600-1)		NA