

IUKA, MISSISSIPPI

AL-11013 (FAA)

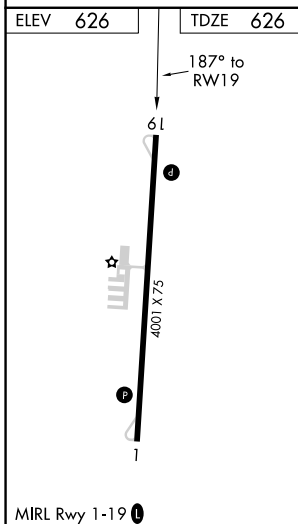
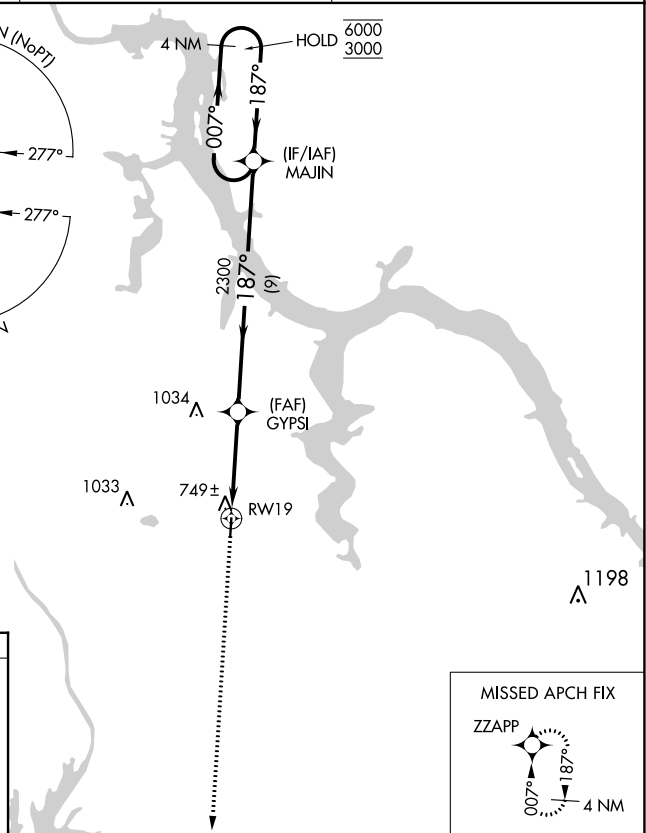
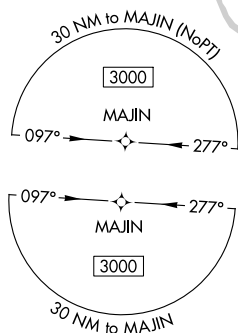
22195

APP CRS	Rwy Idg	<b>4001</b>
<b>187°</b>	TDZE	<b>626</b>
	Apt Elev	<b>626</b>

# RNAV (GPS) RWY 19

IUKA (15M)

RNP APCH-GPS.		MISSED APPROACH: Climb to 3000 direct ZZAPP and hold.
<p><b>▲ NA</b> Procedure NA at night. Rwy 19 helicopter visibility reduction below 1 SM NA. Use Muscle Shoals altimeter setting.</p>		
MSL ASOS <b>119.425</b>	MEMPHIS CENTER <b>124.35 318.1</b>	CTAF <b>122.9 0</b>



3000	ZZAPP	MAJIN	4 NM Holding Pattern
<p>RY 19</p> <p>≤ 4.00° TCH 52</p> <p>2300</p>		<p>007° → 6000</p> <p>← 187° 3000</p>	
3.8 NM		9 NM	
CATEGORY	A	B	C D
LNAV MDA	1080-1	454 (500-1)	NA

IUKA, MISSISSIPPI  
Orig 14JUL22

34°46'N-88°10'W

# RNAV (GPS) RWY 19

IUKA (15M)

SC-4, 11 JUL 2024 to 08 AUG 2024

SC-4, 11 JUL 2024 to 08 AUG 2024