

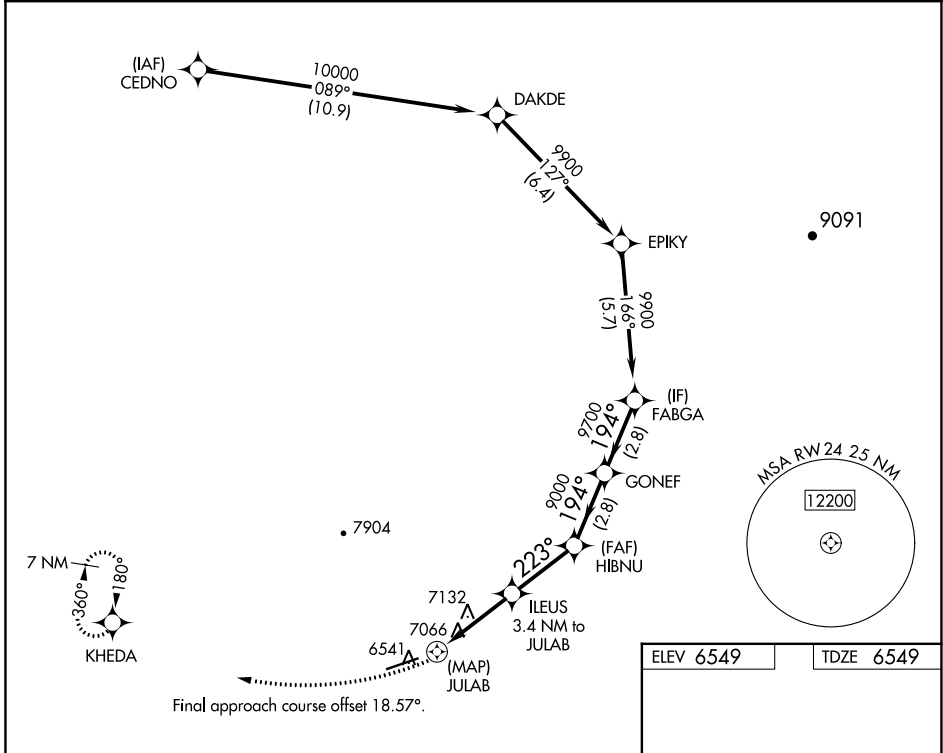
WAAS CH <b>60942</b> <b>W24A</b>	APP CRS <b>223°</b>	Rwy Idg TDZE Apt Elev	<b>7000</b> <b>6549</b> <b>6549</b>
--	------------------------	-----------------------------	---

# RNAV (GPS) RWY 24

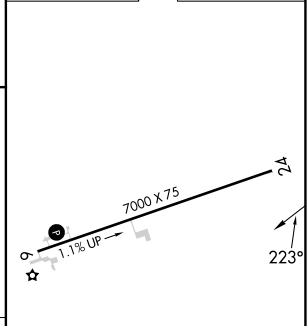
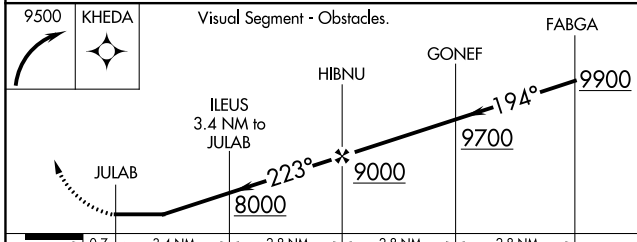
DIXON (DWX)

RNP APCH - GPS.	MISSED APPROACH: Climbing right turn to 9500 direct KHEDA and hold, continue climb-in-hold to 9500.
<p>▼ Rwy 24 helicopter visibility reduction below 1 SM NA.</p> <p>▲ Straight-in Rwy 24 NA at night, Circling Rwy 24 NA at night.</p>	

AWOS-3PT <b>119.425</b>	DENVER CENTER <b>120.475 235.975</b>	CTAF <b>122.9</b>
----------------------------	---	----------------------



ELEV 6549	TDZE 6549
-----------	-----------



CATEGORY	A	B	C	D
LP MDA	7400-1 851 (900-1)	7400-1¼ 851 (900-1¼)	7400-2½	851 (900-2½)
LNAV MDA	7420-1 871 (900-1)	7420-1¼ 871 (900-1¼)	7420-2½	871 (900-2½)
CIRCLING	7420-1¼	871 (900-1¼)	7440-2¾ 891 (900-2¾)	7900-3 1351 (1400-3)

MIRL Rwy 6-24 **0**  
REIL Rwys 6 and 24 **0**

NW-1, 11 JUL 2024 to 08 AUG 2024

NW-1, 11 JUL 2024 to 08 AUG 2024